

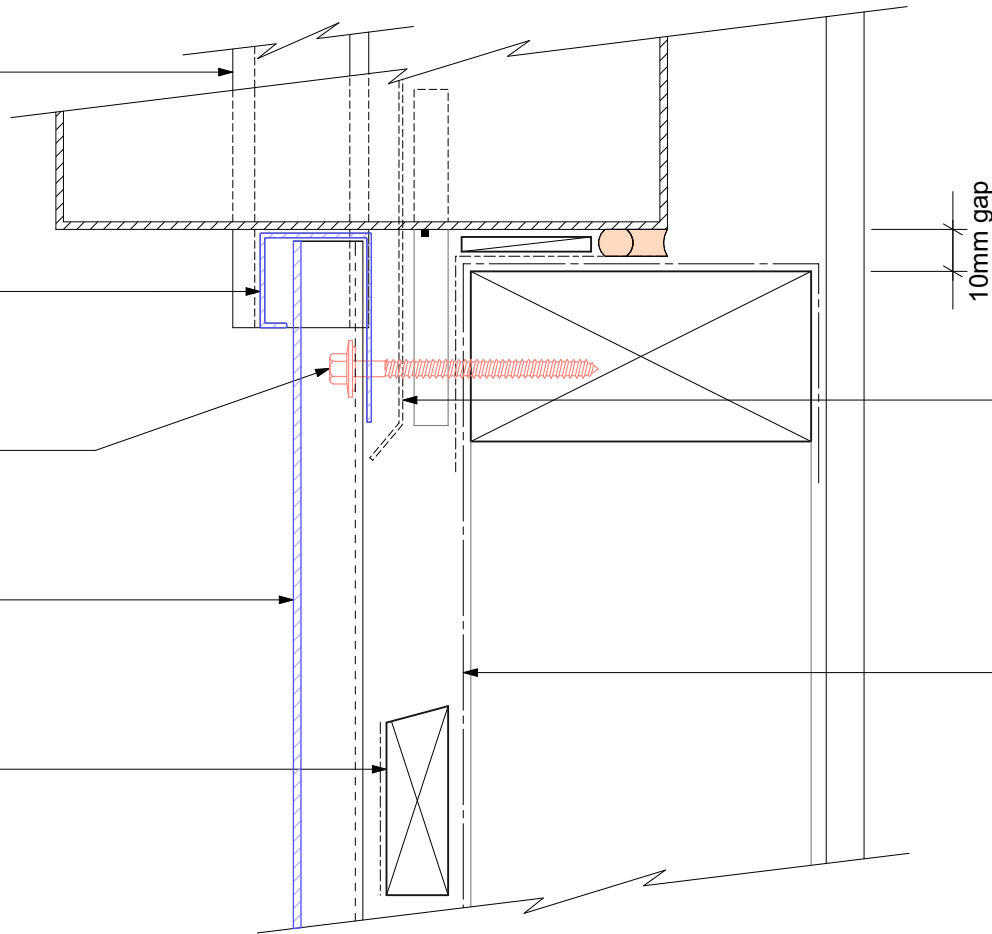
Flashclad extruded aluminium  
2 Part Jamb

Flashclad extruded aluminium  
Cover Mould

**NOTE:**  
Euro-line / Euro-lap Vertical can be fixed to  
dwang lines at **600mm or 800mm** centres  
Type 17 stainless steel 65mm  
roofing screws

Vertically fixed Euro-line / Euro-lap  
powder coated aluminium cladding installed  
by Flashclad Nationwide Distributor Network

20mm H3.1 horizontal cavity  
battens at maximum 800crs  
with 15 deg slope to top edge  
and separation layer over



Flashclad Back Plate pack  
to behind jamb flashing and  
cut to fit around base of  
meter box (shown dashed)

Building wrap or Rigid Air  
Barrier installed as per  
manufacturers specification

**NOTE:**  
Meter box installed with  
flashing tape and air seal over  
PEF backing rod as per  
NZBC E2/AS1



**Flashclad**  
CLADDING FOR LIFE

**METER BOX SILL**  
Original Scale 1:2  
Revision - 01 October 2019

**Eurobord**  
VERTICAL