

FIRE SAFETY RATED

NOTE:

Flashclad cladding systems are non-combustible and meet NZ fire safety standards when used in conjunction with fire rated designed wall structures. (also suitable for use on boundary walls)

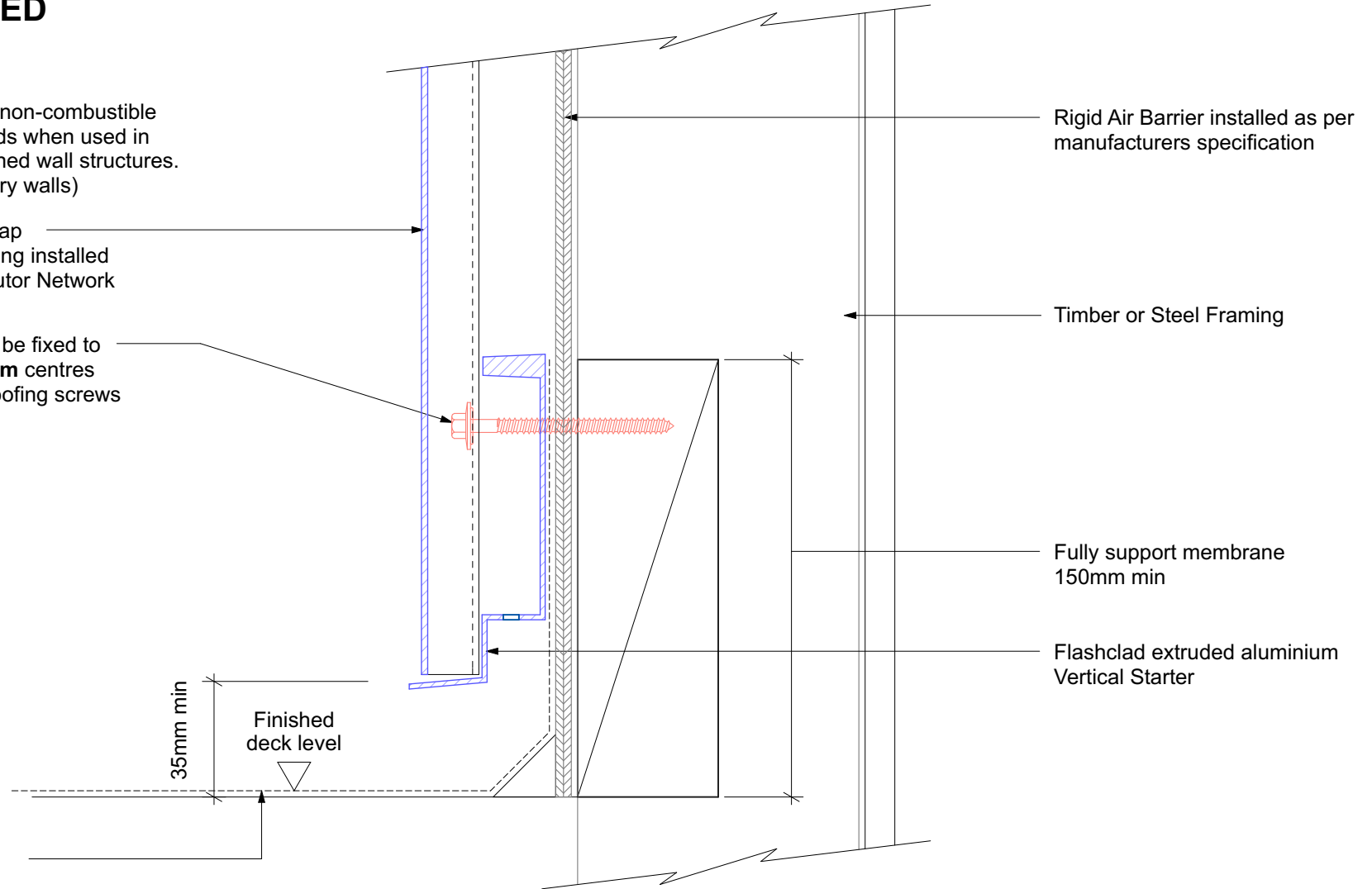
Vertically fixed Euro-line / Euro-lap powder coated aluminium cladding installed by Flashclad Nationwide Distributor Network

NOTE:

Euro-line / Euro-lap Vertical can be fixed to dwang lines at **600mm or 800mm** centres
Type 17 stainless steel 65mm roofing screws

NOTE:

Flashclad multi purpose aluminium cavity batten at maximum 800crs



Deck membrane on structure

35mm min

Finished deck level

Rigid Air Barrier installed as per manufacturers specification

Timber or Steel Framing

Fully support membrane 150mm min

Flashclad extruded aluminium Vertical Starter



Flashclad
CLADDING FOR LIFE

ENCLOSED BALCONY BASE

Original Scale 1:2
Revision - 01 October 2019

Eurobord
VERTICAL