

# FIRE SAFETY RATED

**NOTE:**

Flashclad cladding systems are non-combustible and meet NZ fire safety standards when used in conjunction with fire rated designed wall structures. (also suitable for use on boundary walls)

Vertically fixed Euro-line / Euro-lap powder coated aluminium cladding installed by Flashclad Nationwide Distributor Network

**NOTE:**

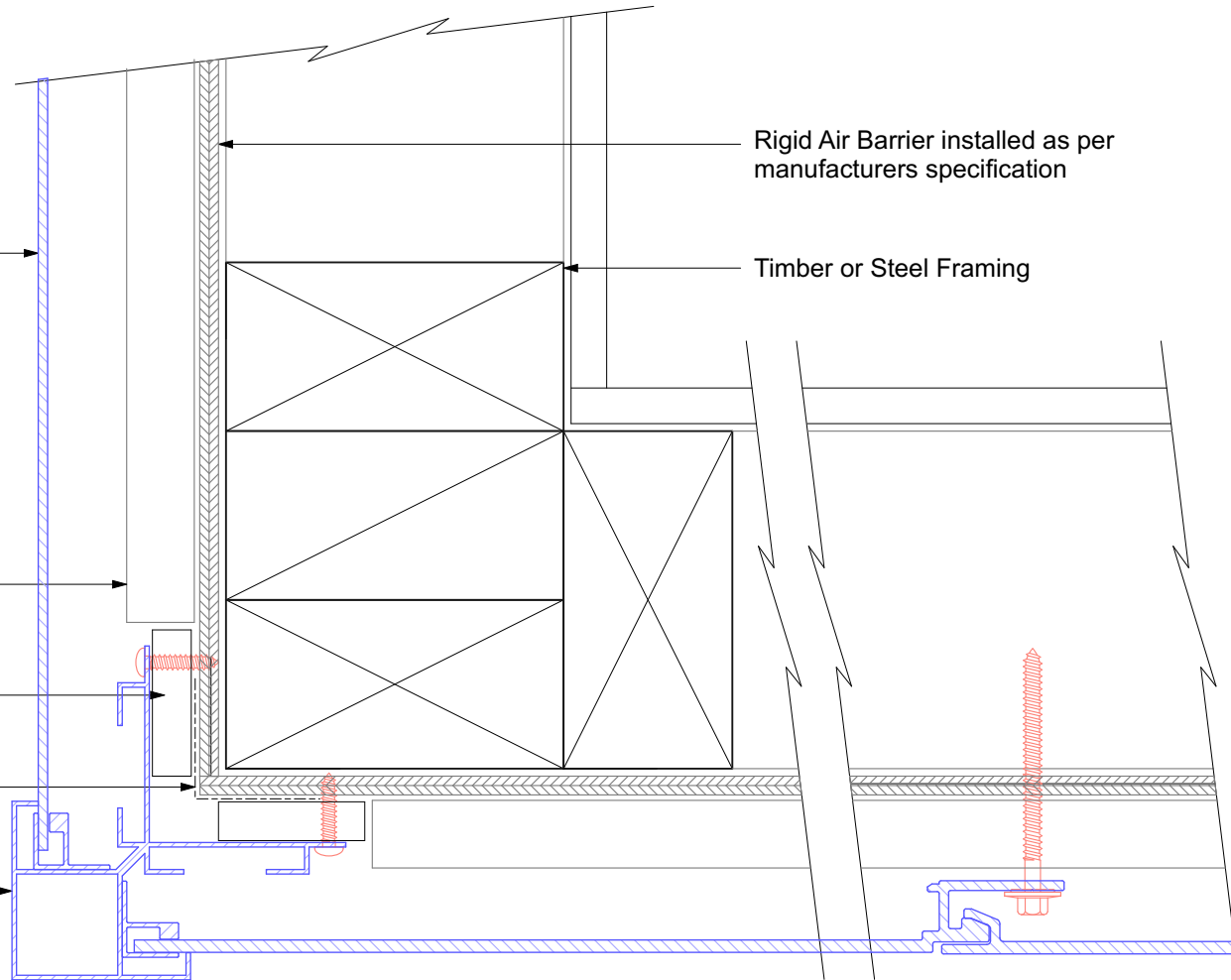
Euro-line / Euro-lap Vertical can be fixed to dwang lines at **600mm or 800mm** centres  
Type 17 stainless steel 65mm roofing screws

Flashclad multi purpose aluminium cavity batten

Fibre cement packers installed by Flashclad

flashing tape as per manufacturers specification

Flashclad extruded aluminium External Corner with Locators



## EXTERNAL CORNER

Original Scale 1:2

Revision - 01 October 2019

# Eurobord

## VERTICAL