

FIRE SAFETY RATED

NOTE:

Flashclad cladding systems are non-combustible and meet NZ fire safety standards when used in conjunction with fire rated designed wall structures. (also suitable for use on boundary walls)

Vertically fixed Euro-line / Euro-lap powder coated aluminium cladding installed by Flashclad Nationwide Distributor Network

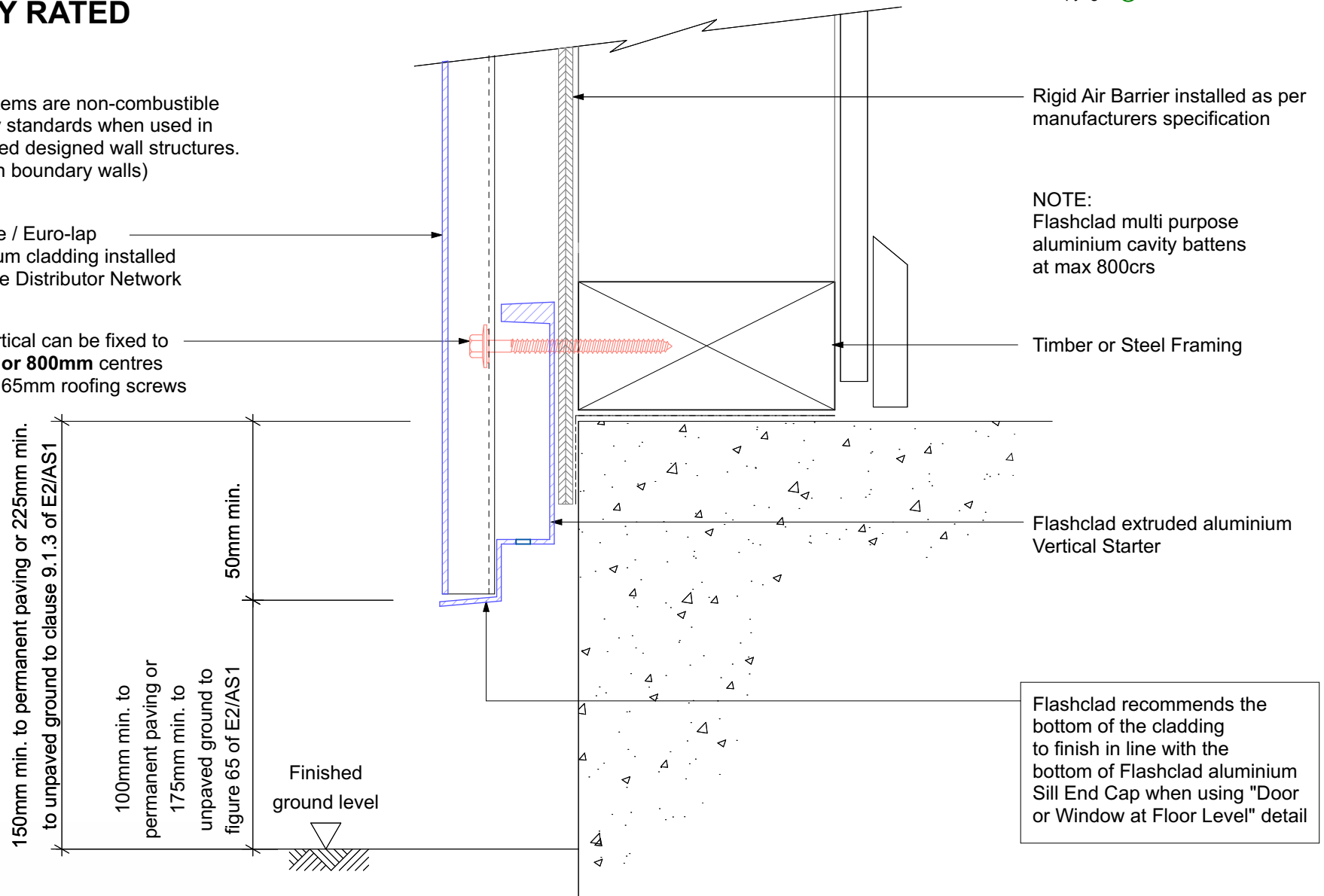
NOTE:

Euro-line / Euro-lap Vertical can be fixed to dwang lines at **600mm or 800mm** centres
Type 17 stainless steel 65mm roofing screws

Rigid Air Barrier installed as per manufacturers specification

NOTE:
Flashclad multi purpose aluminium cavity battens at max 800crs

Timber or Steel Framing



BASE STARTER AND CAVITY CLOSURE

Original Scale 1:2

Revision - 01 October 2019

Eurobord VERTICAL