

Flashclad extruded aluminium
2 Part Jamb

3mm gap between bottom edge
of the cladding and the top of the
Flashclad Sill

Flashclad extruded aluminium
Slimline Sill with End Cap
(shown dashed)

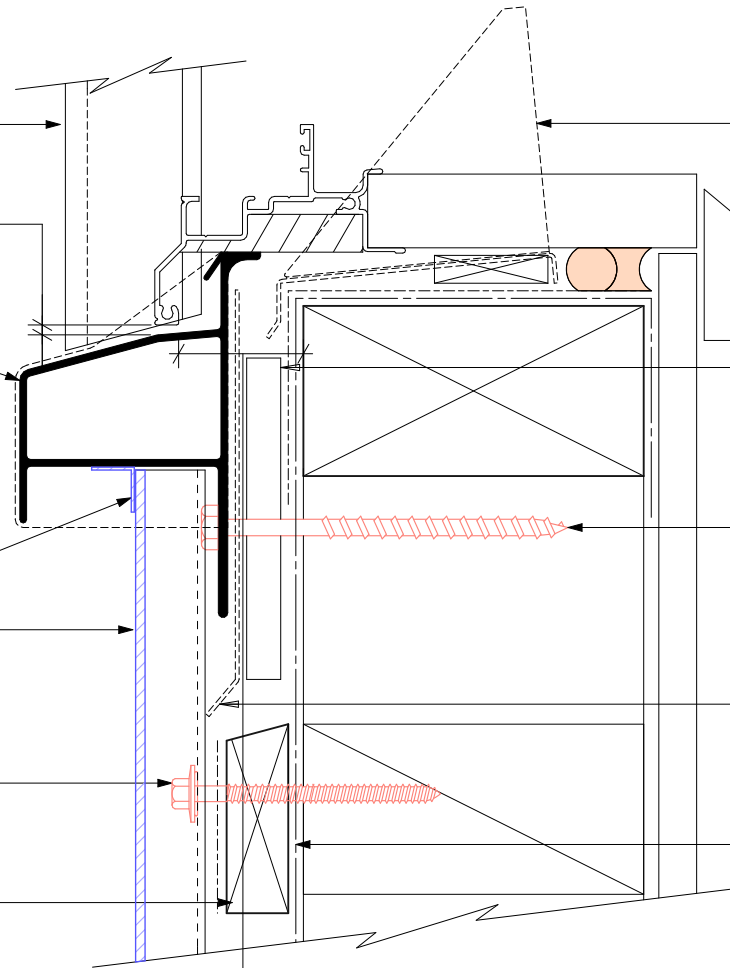
NOTE:
Sill provides full joinery support
(wanz bar not required)

12x12mm aluminium angle

Vertically fixed Euro-line / Euro-lap
powder coated aluminium cladding installed
by Flashclad Nationwide Distributor Network

NOTE:
Euro-line / Euro-lap Vertical can be fixed to
dwang lines at **600mm or 800mm** centres
Type 17 stainless steel 65mm
roofing screws

20mm H3.1 horizontal cavity
battens at maximum 800crs
with 15 deg slope to top edge
and separation layer over



Flashclad aluminium Mitre
Soaker supplied by Flashclad
installed by Builder

10mm gap

H3.1 packer supplied and
installed by Flashclad

H17 type SS screw at 600 crs
with minimum 65mm frame
embedment

Flashclad Back Plate
(shown dashed)

Building wrap or Rigid Air
Barrier installed as per
manufacturers specification

25mm from the outside face of the
framing (for building wrap detailing)
or 25mm from the outside face of the
Rigid Air Barrier to the back of the
aluminium window or door frame

NOTE:
Aluminium joinery installed with
flashing tape and air seal over
PEF backing rod as per
NZBC E2/AS1