

# FIRE SAFETY RATED

Flashclad extruded aluminium  
2 Part Jamb

3mm gap between bottom edge  
of the cladding and the top of the  
Flashclad Sill

Flashclad extruded aluminium  
Slimline Sill with End Cap  
(shown dashed)

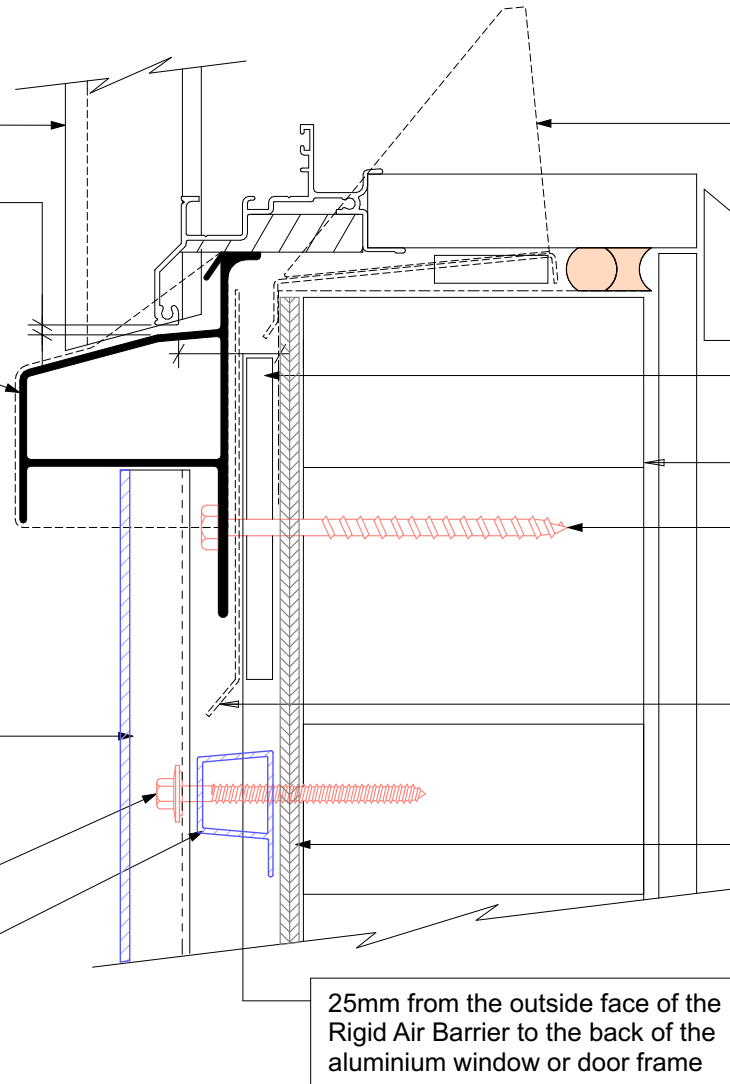
**NOTE:**  
Sill provides full joinery support  
(wanz bar not required)

**NOTE:**  
Flashclad cladding systems are non-combustible  
and meet NZ fire safety standards when used in  
conjunction with fire rated designed wall structures.  
(also suitable for use on boundary walls)

Vertically fixed Euro-line / Euro-lap  
powder coated aluminium cladding installed  
by Flashclad Nationwide Distributor Network

**NOTE:**  
Euro-line / Euro-lap Vertical can be fixed to  
dwang lines at **600mm or 800mm** centres  
Type 17 stainless steel 65mm roofing screws

Flashclad multi purpose  
aluminium cavity batten



Flashclad aluminium Mitre  
Soaker supplied by Flashclad  
installed by Builder

10mm gap

Fibre cement packers  
installed by Flashclad

Timber or Steel Framing

H17 type SS screw at 600 crs  
with minimum 65mm frame  
embedment

Flashclad Back Plate  
(shown dashed)

Rigid Air Barrier installed as per  
manufacturers specification

**NOTE:**  
Aluminium joinery installed with  
flashing tape and air seal over  
PEF backing rod as per  
NZBC E2/AS1

25mm from the outside face of the  
Rigid Air Barrier to the back of the  
aluminium window or door frame



**SILL**  
Original Scale 1:2  
Revision - 01 October 2019

**Eurobord**  
**VERTICAL**