

NOTE:

Euro-line / Euro-lap Vertical can be fixed to dwang lines at **600mm or 800mm** centres
Type 17 stainless steel 65mm roofing screws

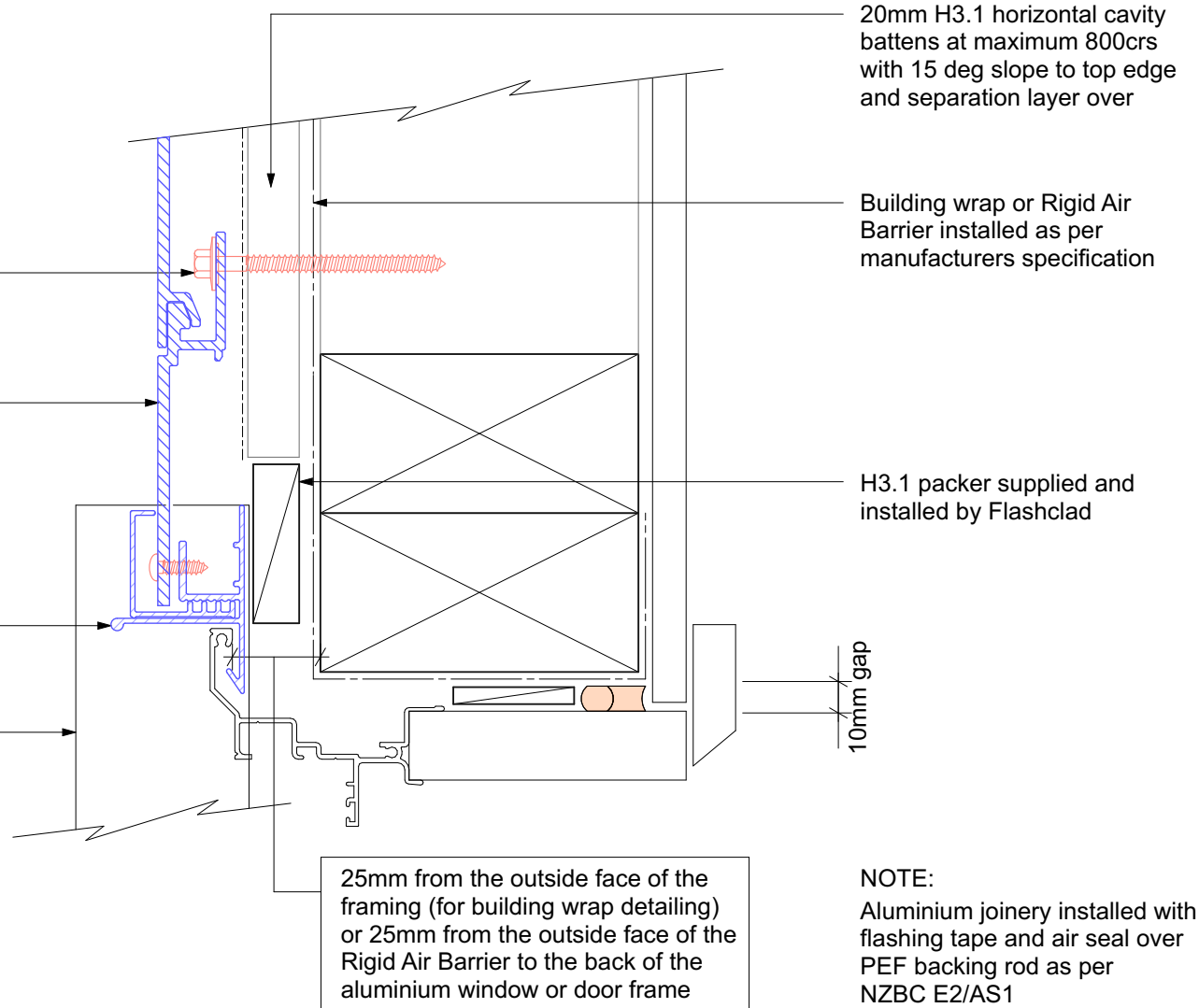
Vertically fixed Euro-line / Euro-lap powder coated aluminium cladding installed by Flashclad Nationwide Distributor Network

Flashclad extruded aluminium 2 Part Jamb

Line of Flashclad Slimline Sill Flashing below

NOTE:

Sill provides full joinery support (wanz bar not required)



NOTE:

Aluminium joinery installed with flashing tape and air seal over PEF backing rod as per NZBC E2/AS1