

FIRE SAFETY RATED

NOTE:

Flashclad cladding systems are non-combustible and meet NZ fire safety standards when used in conjunction with fire rated designed wall structures. (also suitable for use on boundary walls)

NOTE:

Euro-line / Euro-lap Vertical can be fixed to dwang lines at **600mm or 800mm** centres
Type 17 stainless steel 65mm roofing screws

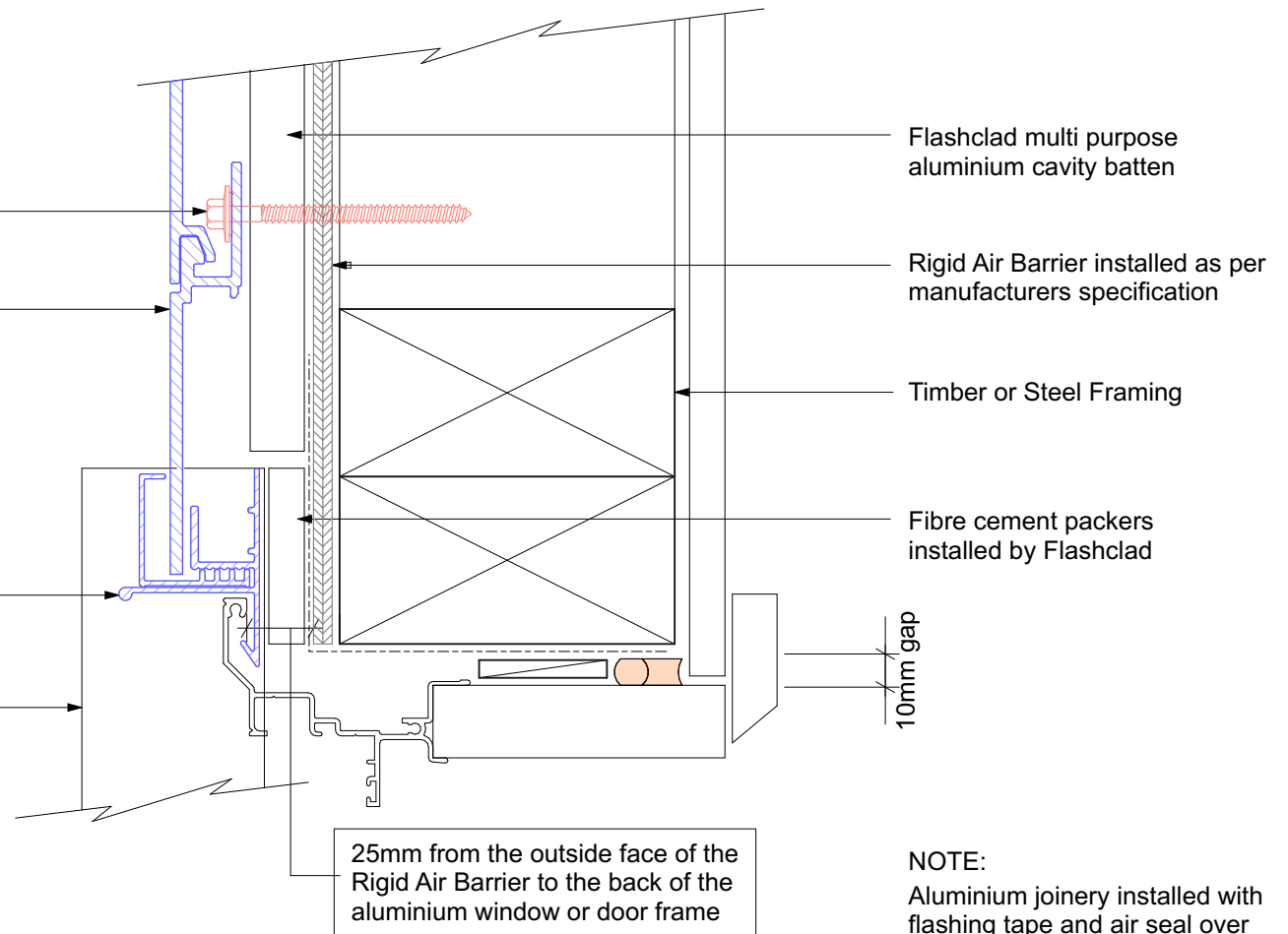
Vertically fixed Euro-line / Euro-lap powder coated aluminium cladding installed by Flashclad Nationwide Distributor Network

Flashclad extruded aluminium 2 Part Jamb

Line of Flashclad Slimline Sill Flashing below

NOTE:

Sill provides full joinery support (wanz bar not required)



Flashclad multi purpose aluminium cavity batten

Rigid Air Barrier installed as per manufacturers specification

Timber or Steel Framing

Fibre cement packers installed by Flashclad

10mm gap

25mm from the outside face of the Rigid Air Barrier to the back of the aluminium window or door frame

NOTE:

Aluminium joinery installed with flashing tape and air seal over PEF backing rod as per NZBC E2/AS1



JAMB
Original Scale 1:2
Revision - 01 October 2019

Eurobord
VERTICAL