

FIRE SAFETY RATED

NOTE:

Flashclad cladding systems are non-combustible and meet NZ fire safety standards when used in conjunction with fire rated designed wall structures. (also suitable for use on boundary walls)

Vertically fixed Euro-line / Euro-lap powder coated aluminium cladding installed by Flashclad Nationwide Distributor Network

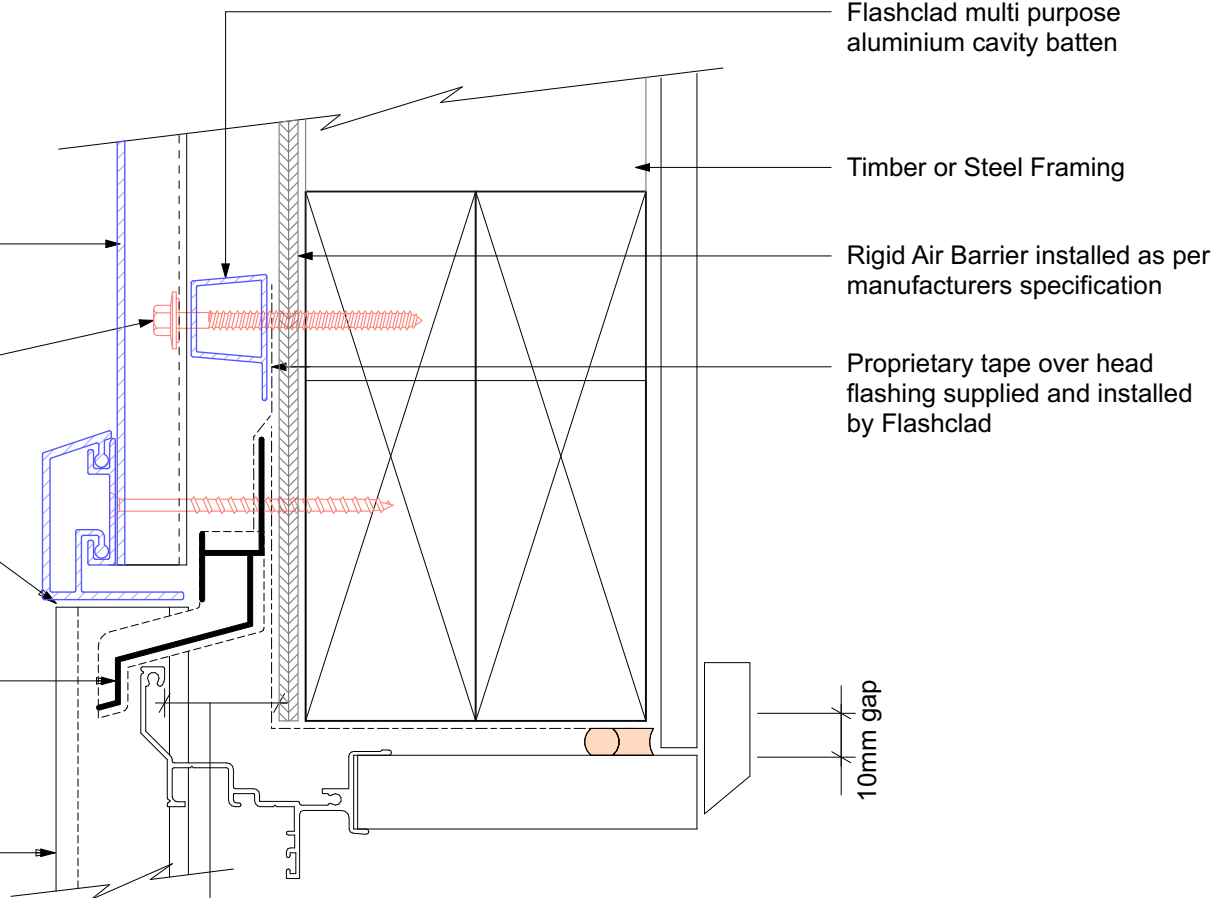
NOTE:

Euro-line / Euro-lap Vertical can be fixed to dwang lines at **600mm or 800mm** centres
Type 17 stainless steel 65mm roofing screws

Extruded aluminium Adjustable Head Trim must be hard down on the top of the Flashclad Jamb fin

Flashclad extruded aluminium one piece Cavity Closure and Head Flashing with Stop End (shown dashed)

Flashclad extruded aluminium 2 Part Jamb



25mm from the outside face of the Rigid Air Barrier to the back of the aluminium window or door frame

NOTE:
Aluminium joinery installed with flashing tape and air seal over PEF backing rod as per NZBC E2/AS1



HEAD
Original Scale 1:2
Revision - 01 October 2019

Eurobord
VERTICAL