

Vertically fixed Euro-rib powder coated aluminium cladding installed by Flashclad Nationwide Distributor Network

NOTE:

Euro-rib Vertical can be fixed to dwang lines at **600mm or 800mm** centres
Type 17 stainless steel 65mm roofing screws

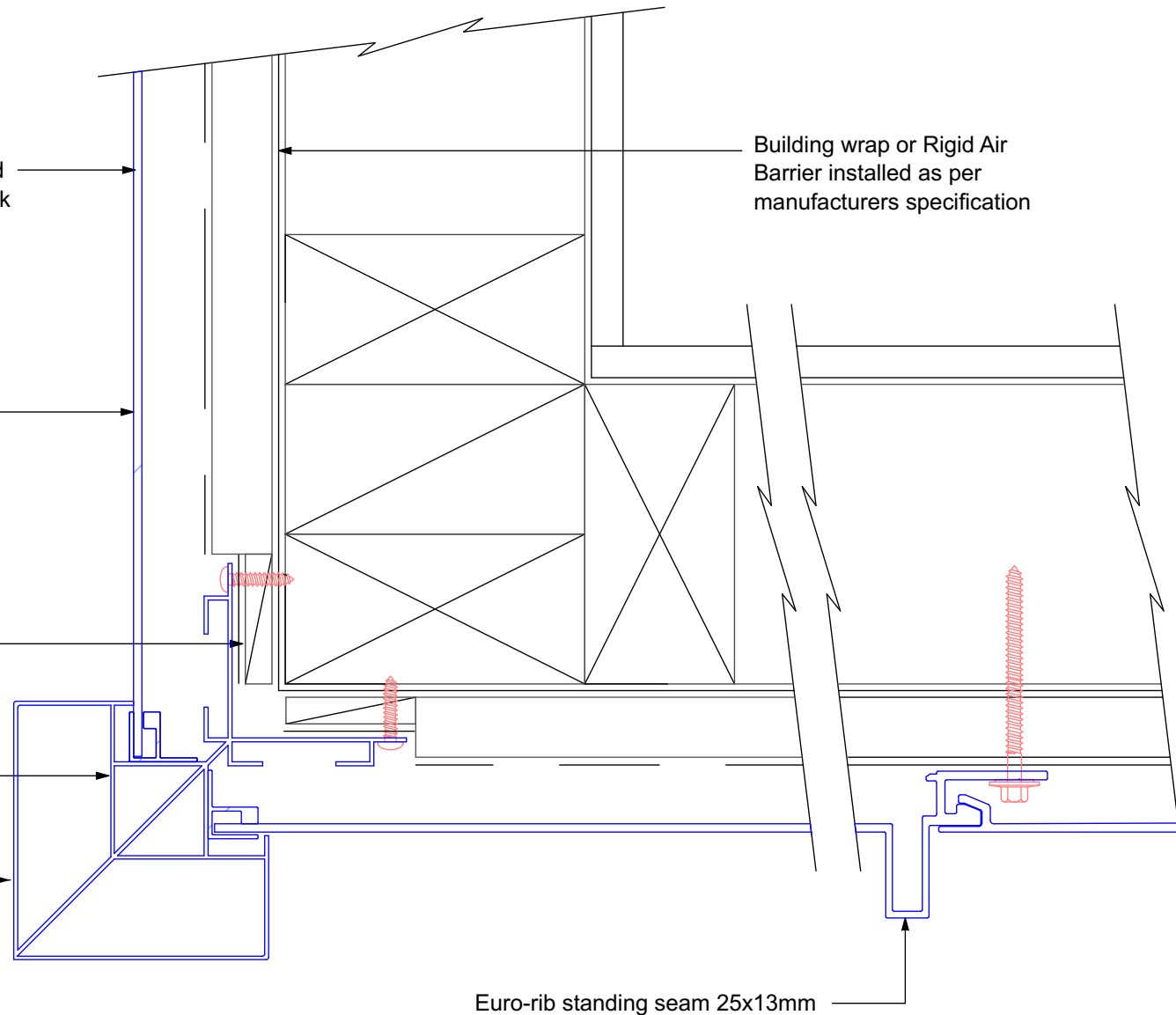
20mm H3.1 horizontal cavity battens at maximum 800crs with 15 deg slope to top edge and separation layer over

H3.1 200mm long packers

Flashclad extruded aluminium External Corner with Locators

Euro-rib external corner

Building wrap or Rigid Air Barrier installed as per manufacturers specification



EXTERNAL CORNER

Original Scale 1:2

Revision - 05 August 2021

Eurobord VERTICAL