

Flashclad extruded aluminium  
2 Part Jamb

3mm gap between bottom edge  
of the cladding and the top of the  
Flashclad Sill

Flashclad extruded aluminium  
Metro Sill with End Cap  
(shown in black line)

**NOTE:**

Sill provides full joinery support  
(wanz bar not required)

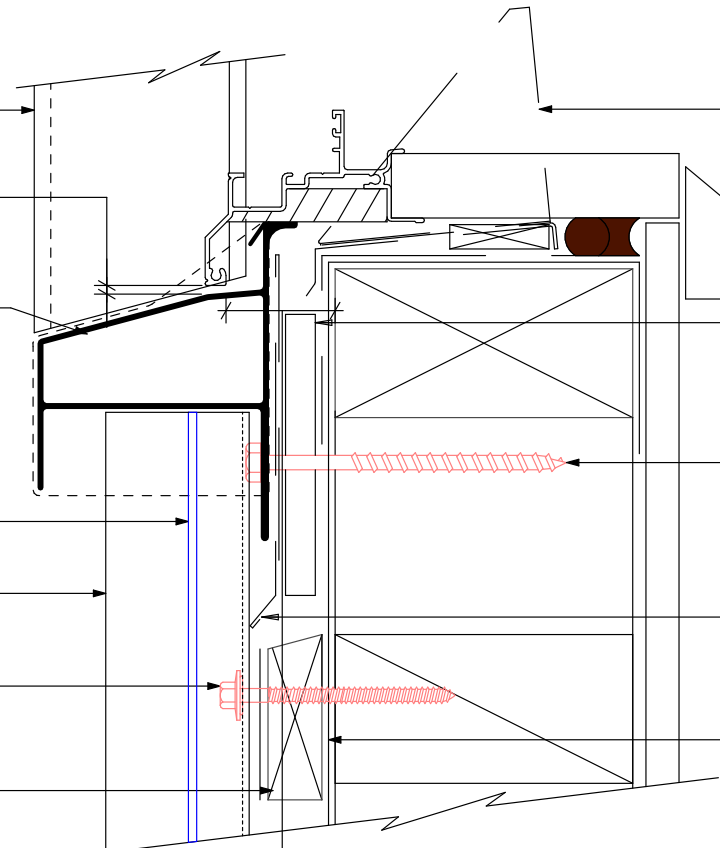
Vertically fixed Euro-rib  
powder coated aluminium cladding installed  
by Flashclad Nationwide Distributor Network

Outer edge of Euro-rib standing seam

**NOTE:**

Euro-rib Vertical can be fixed to  
dwang lines at **600mm or 800mm** centres  
Type 17 stainless steel 65mm  
roofing screws

20mm H3.1 horizontal cavity  
battens at maximum 800crs  
with 15 deg slope to top edge  
and separation layer over



Flashclad aluminium Mitre  
Soaker supplied by Flashclad  
installed by Builder

10mm gap

H3.1 packer supplied and  
installed by Flashclad

H17 type SS screw at 600 crs  
with minimum 65mm frame  
embedment

Flashclad Back Plate  
(shown dashed)

Building wrap or Rigid Air  
Barrier installed as per  
manufacturers specification

25mm from the outside face of the  
framing (for building wrap detailing)  
or 25mm from the outside face of the  
Rigid Air Barrier to the back of the  
aluminium window or door frame

**NOTE:**

Aluminium joinery installed with  
flashing tape and air seal over  
PEF backing rod as per  
NZBC E2/AS1



**SILL**  
Original Scale 1:2  
Revision - 05 August 2021

**Eurobord**  
**VERTICAL**