

Vertically fixed Euro-rib powder coated aluminium cladding installed by Flashclad Nationwide Distributor Network

NOTE:

Euro-rib Vertical can be fixed to dwang lines at **600mm or 800mm** centres
Type 17 stainless steel 65mm roofing screws

Outer edge of Euro-rib standing seam

Euro-rib head trim

Extruded aluminium Adjustable Head Trim must be hard down on the top of the Flashclad Jamb fin

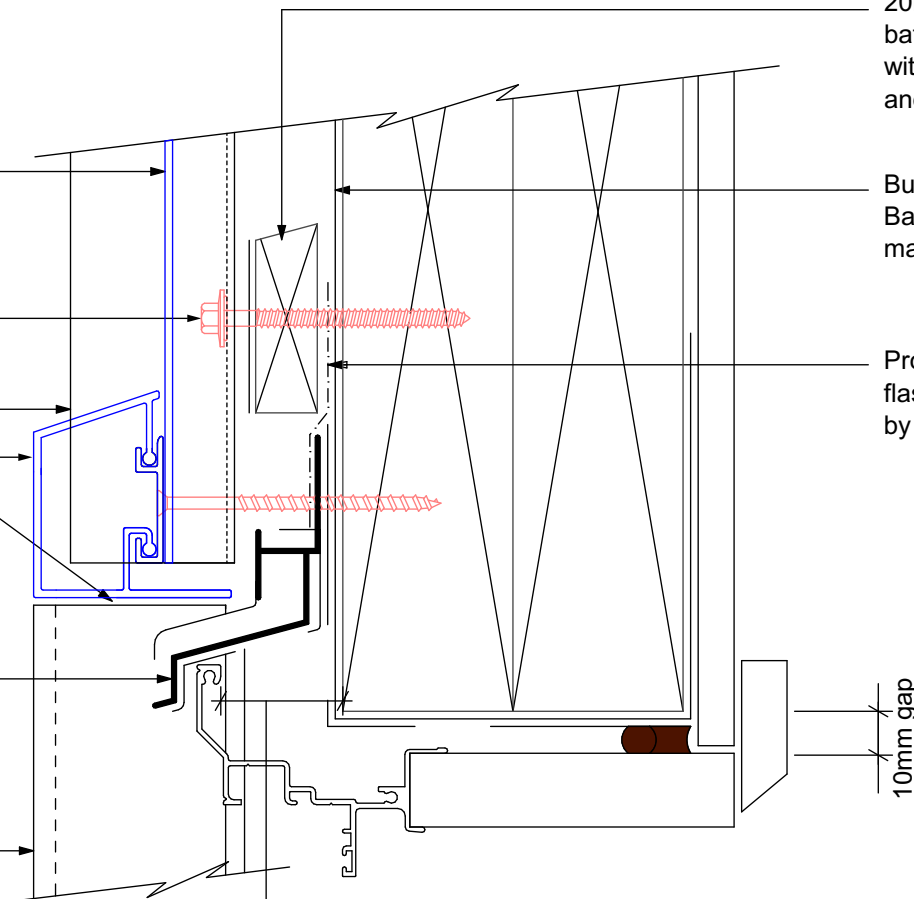
Flashclad extruded aluminium one piece Cavity Closure and Head Flashing with Stop End (shown dashed)

Flashclad extruded aluminium 2 Part Jamb

20mm H3.1 horizontal cavity battens at maximum 800crs with 15 deg slope to top edge and separation layer over

Building wrap or Rigid Air Barrier installed as per manufacturers specification

Proprietary tape over head flashing supplied and installed by Flashclad



25mm from the outside face of the framing (for building wrap detailing) or 25mm from the outside face of the Rigid Air Barrier to the back of the aluminium window or door frame

NOTE:
Aluminium joinery installed with flashing tape and air seal over PEF backing rod as per NZBC E2/AS1