

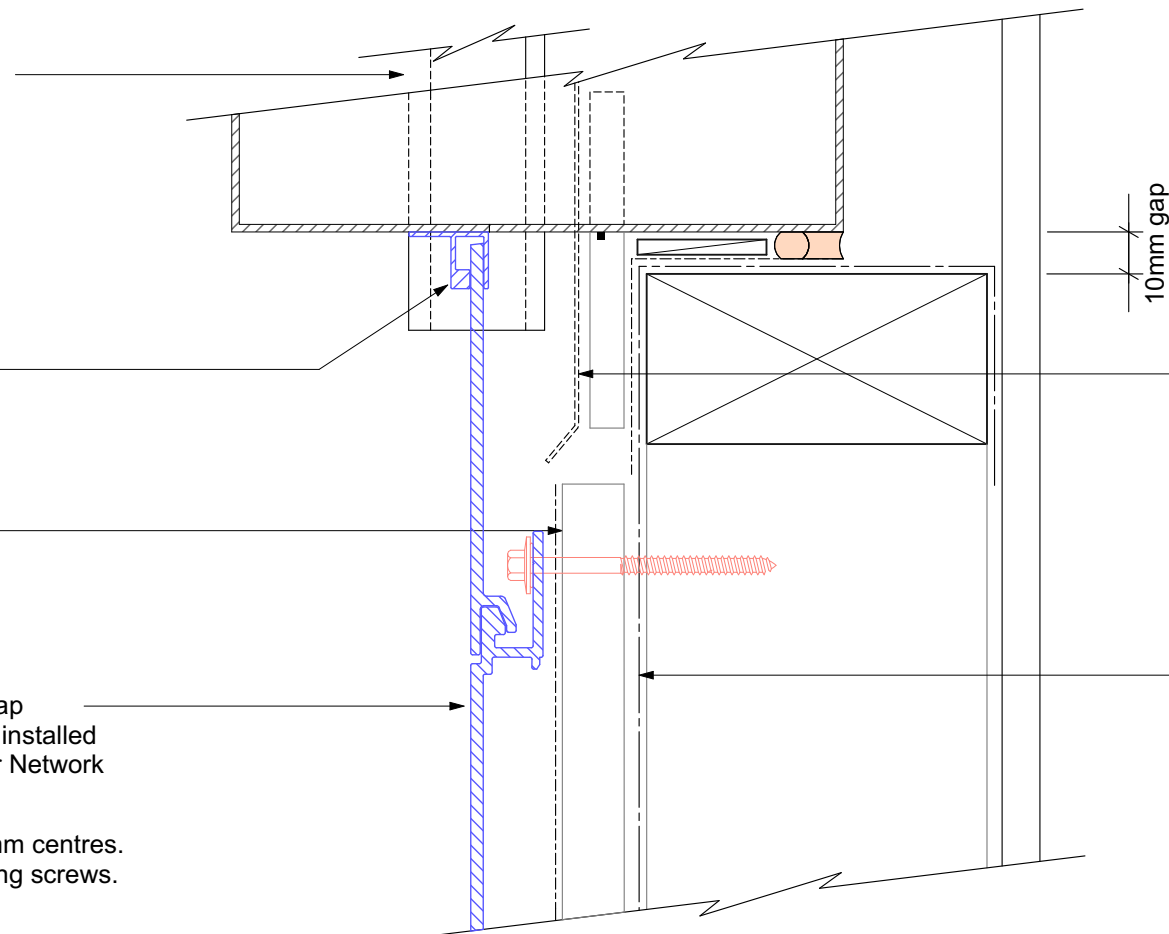
Flashclad extruded aluminium
2 Part Jamb

Flashclad extruded aluminium
Locator

20mm H3.1 vertical cavity batten
with seperation layer over

Horizontally fixed Euro-line / Euro-lap
powder coated aluminium cladding installed
by Flashclad Nationwide Distributor Network

NOTE:
Fixing into studs at maximum 600mm centres.
Type 17 stainless steel 65mm roofing screws.



Flashclad Back Plate pack
to behind jamb flashing and
cut to fit around base of
meter box(shown dashed)

Building wrap or Rigid Air
Barrier installed as per
manufacturers specification

NOTE:
Meter box installed with
flashing tape and air seal over
PEF backing rod as per
NZBC E2/AS1