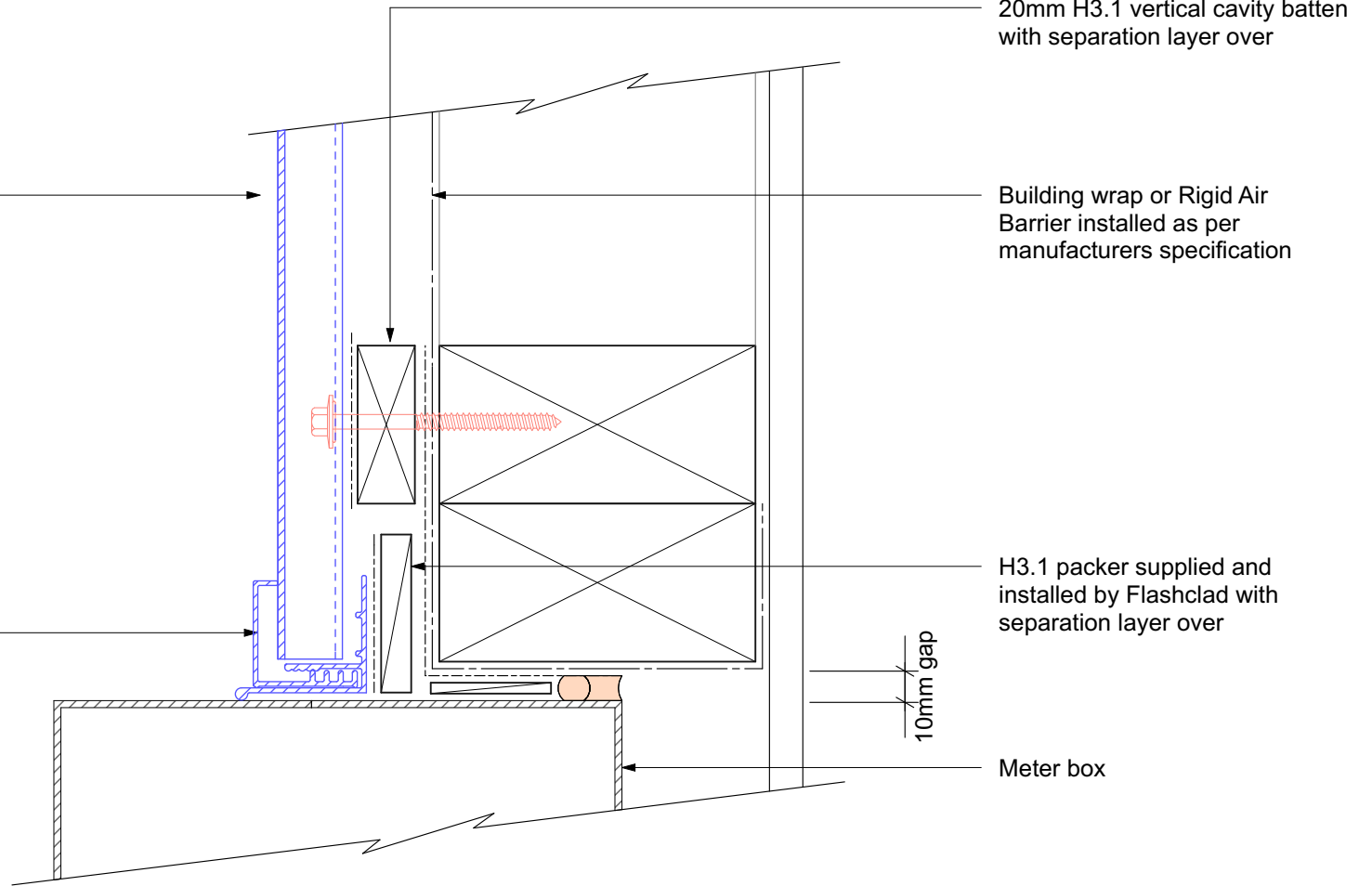


Horizontally fixed Euro-line / Euro-lap powder coated aluminium cladding installed by Flashclad Nationwide Distributor Network

NOTE:
Fixing into studs at maximum 600mm centres.
Type 17 stainless steel 65mm roofing screws.

Flashclad extruded aluminium 2 Part Jamb sealed to meterbox



NOTE:
Meter box installed with flashing tape and air seal over PEF backing rod as per NZBC E2/AS1



METER BOX JAMB
Original Scale 1:2
Revision - 01 October 2019

Eurobord
HORIZONTAL