

Flashclad extruded aluminium
2 Part Jamb

3mm gap between bottom edge
of the cladding and the top of the
Flashclad Sill

Flashclad extruded aluminium
Slimline Sill with End Cap
(shown dashed)

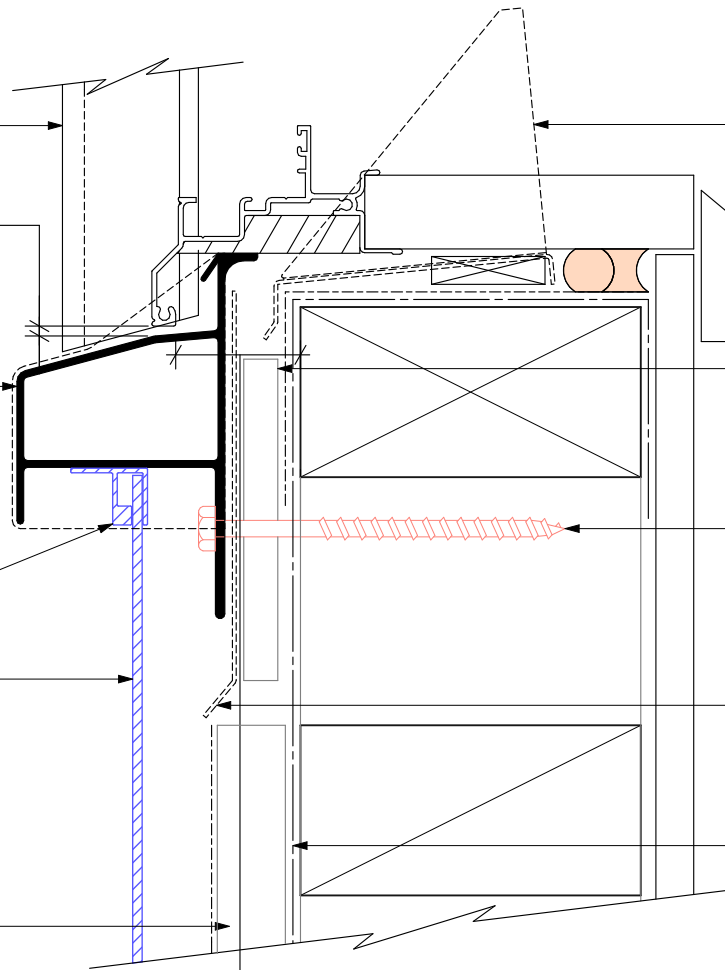
NOTE:
Sill provides full joinery support
(wanz bar not required)

Flashclad extruded aluminium
Locator

Horizontally fixed Euro-line / Euro-lap
powder coated aluminium cladding installed
by Flashclad Nationwide Distributor Network

NOTE:
Fixing into studs at maximum 600mm centres.
Type 17 stainless steel 65mm roofing screws.

20mm H3.1 vertical cavity batten
with separation layer over



Flashclad aluminium Mitre
Soaker supplied by Flashclad
installed by Builder

10mm
gap

H3.1 packer supplied and
installed by Flashclad with
separation layer over

H17 type SS screw at 600 crs
with minimum 65mm frame
embedment

Flashclad Back Plate
(shown dashed)

Building wrap or Rigid Air
Barrier installed as per
manufacturers specification

25mm from the outside face of the
framing (for building wrap detailing)
or 25mm from the outside face of the
Rigid Air Barrier to the back of the
aluminium window or door frame

NOTE:
Aluminium joinery installed with
flashing tape and air seal over
PEF backing rod as per
NZBC E2/AS1