

Vertically fixed Dualbord extruded aluminium cladding installed by Flashclad Nationwide Distributor Network

NOTE:

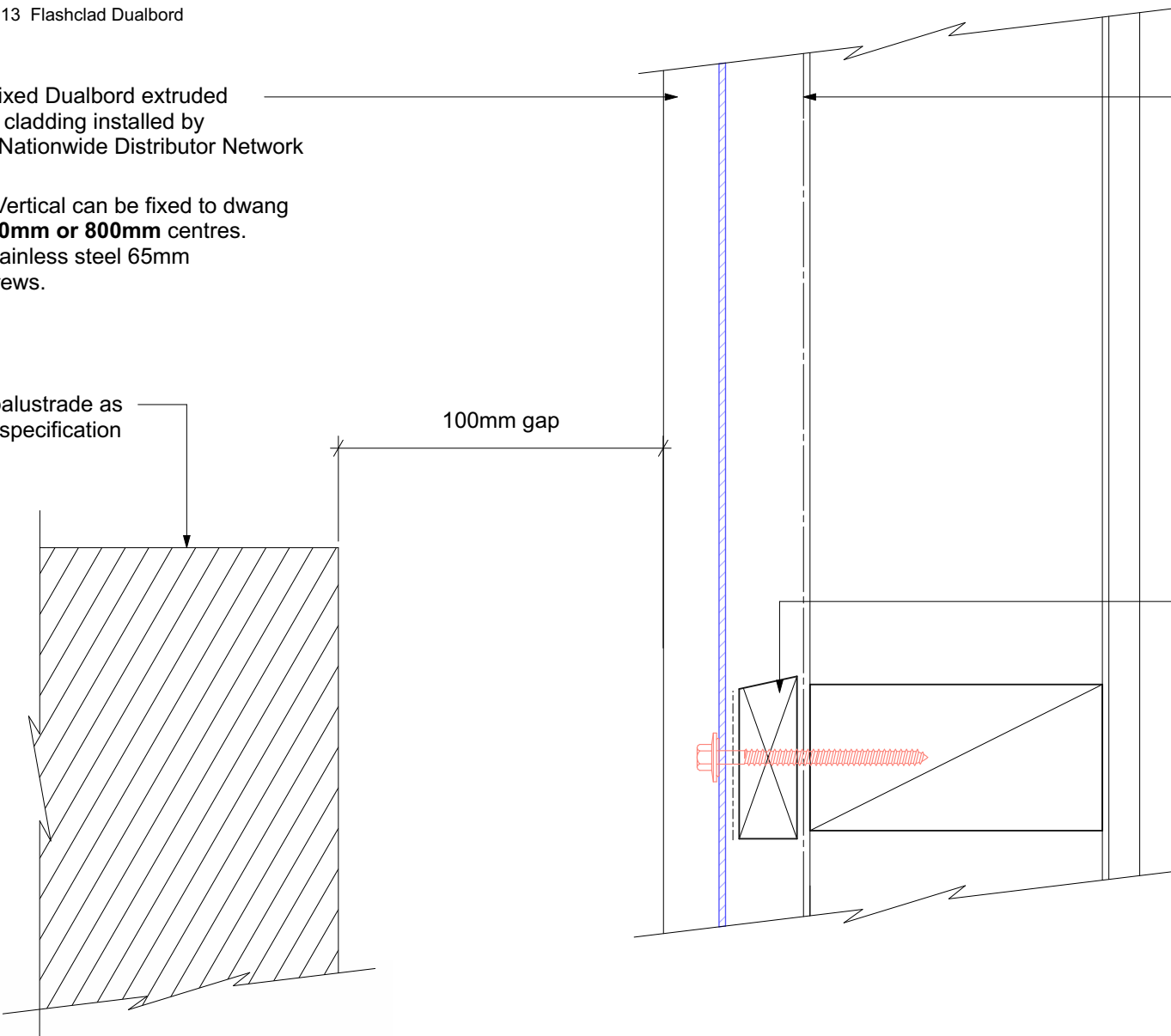
Dualbord Vertical can be fixed to dwang lines at **600mm or 800mm** centres.
Type 17 stainless steel 65mm roofing screws.

Selected balustrade as designers specification

100mm gap

Building wrap or Rigid Air Barrier installed as per manufacturers specification

20mm H3.1 horizontal cavity battens at maximum 800crs with 15 deg slope to top edge and separation layer over



Flashclad
CLADDING FOR LIFE

BALUSTRADE WALL JUNCTION

Original Scale 1:2
Revision - 01 October 2019

Dualbord

VERTICAL