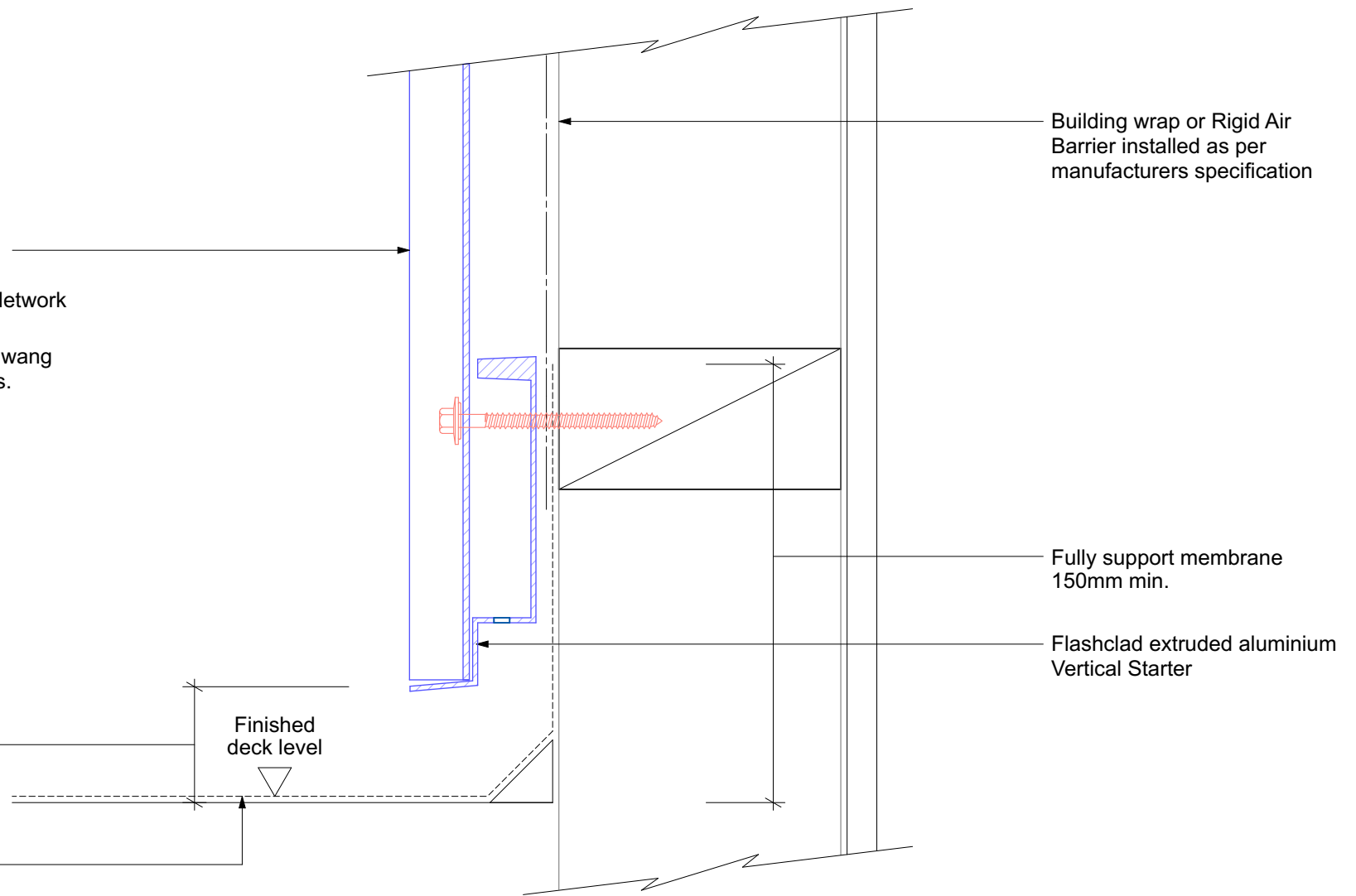


Vertically fixed Dualbord extruded aluminium cladding installed by Flashclad Nationwide Distributor Network

**NOTE:**  
Dualbord Vertical can be fixed to dwang lines at **600mm or 800mm** centres.  
Type 17 stainless steel 65mm roofing screws.

35mm min. at highest point of deck / roof

Deck membrane on structure



**Flashclad**  
CLADDING FOR LIFE

## ENCLOSED BALCONY BASE

Original Scale 1:2  
Revision - 01 October 2019

# Dualbord

## VERTICAL