

Vertically fixed Dualbord extruded aluminium cladding installed by Flashclad Nationwide Distributor Network

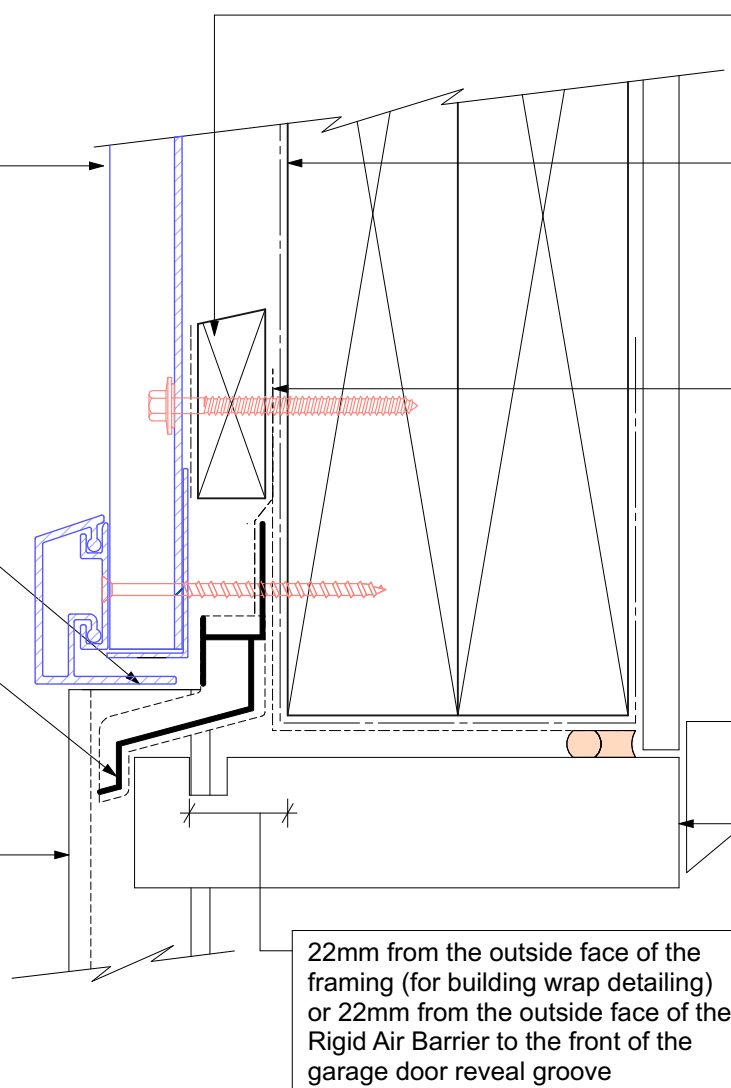
NOTE:

Dualbord Vertical can be fixed to dwang lines at **600mm or 800mm** centres.
Type 17 stainless steel 65mm roofing screws.

Extruded aluminium Adjustable Head Trim must be hard down on the top of the Flashclad Jamb fin

Flashclad extruded aluminium one piece Cavity Closure and Head Flashing with Stop End (shown dashed)

Flashclad extruded aluminium 2 Part Jamb



20mm H3.1 horizontal cavity battens at maximum 800crs with 15 deg slope to top edge and separation layer over

Building wrap or Rigid Air Barrier installed as per manufacturers specification

Proprietary tape over head flashing supplied and installed by Flashclad

10mm gap

Ex. 150x35mm H3.1 timber reveal

22mm from the outside face of the framing (for building wrap detailing) or 22mm from the outside face of the Rigid Air Barrier to the front of the garage door reveal groove

NOTE:
Door reveal installed with flashing tape and air seal over PEF backing rod as per NZBC E2/AS1



GARAGE HEAD
Original Scale 1:2
Revision - 01 October 2019

Dualbord
VERTICAL