

Flashclad extruded aluminium  
2 Part Jamb

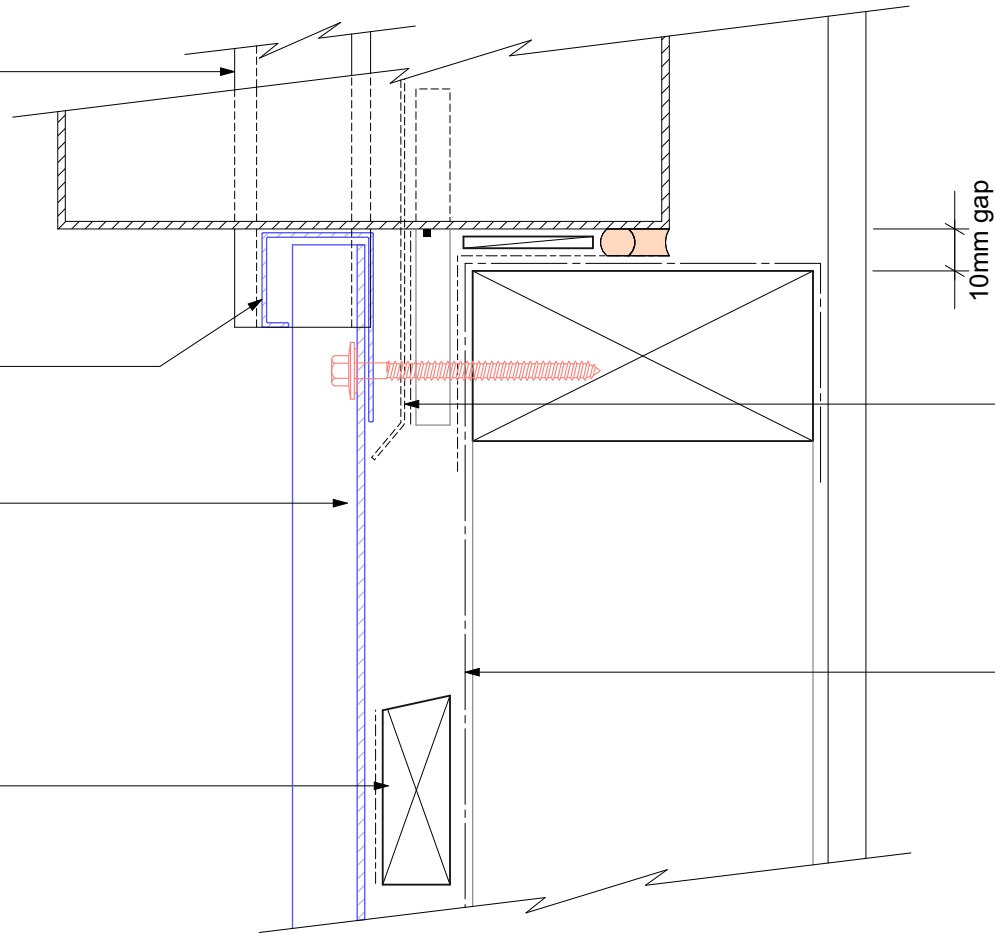
Flashclad extruded aluminium  
Cover Mould

Vertically fixed Dualbord extruded  
aluminium cladding installed by  
Flashclad Nationwide Distributor Network

**NOTE:**

Dualbord Vertical can be fixed to dwang  
lines at **600mm or 800mm** centres.  
Type 17 stainless steel 65mm  
roofing screws.

20mm H3.1 horizontal cavity  
battens at maximum 800crs  
with 15 deg slope to top edge  
and separation layer over



Flashclad Back Plate pack  
to behind jamb flashing and  
cut to fit around base of  
meter box (shown dashed)

Building wrap or Rigid Air  
Barrier installed as per  
manufacturers specification

**NOTE:**  
Meter box installed with  
flashing tape and air seal over  
PEF backing rod as per  
NZBC E2/AS1



**Flashclad**  
CLADDING FOR LIFE

**METER BOX SILL**  
Original Scale 1:2  
Revision - 01 October 2019

**Dualbord**  
VERTICAL