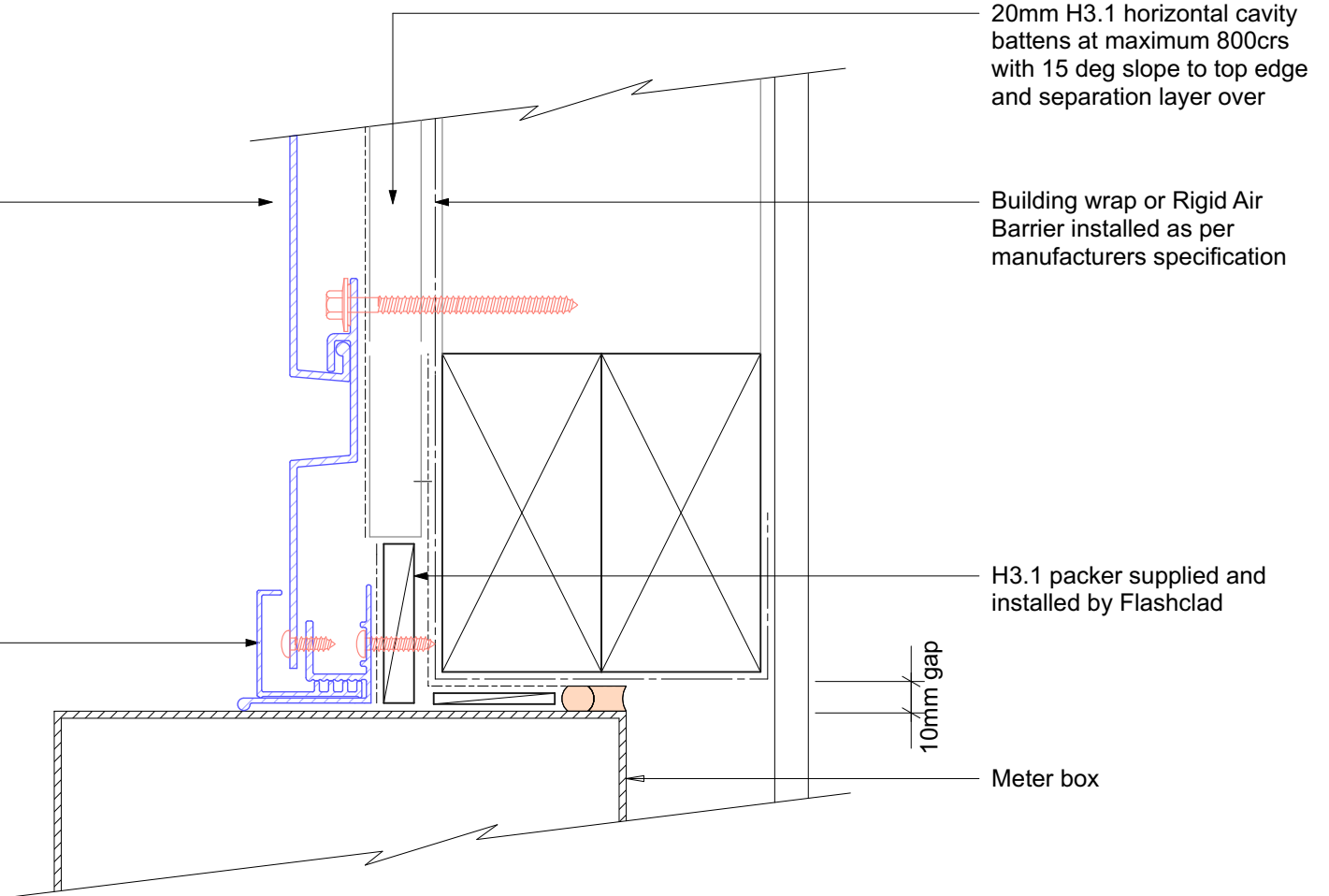


Vertically fixed Dualbord extruded aluminium cladding installed by Flashclad Nationwide Distributor Network

NOTE:

Dualbord Vertical can be fixed to dwang lines at **600mm or 800mm** centres. Type 17 stainless steel 65mm roofing screws.

Flashclad extruded aluminium 2 Part Jamb sealed to meterbox



20mm H3.1 horizontal cavity battens at maximum 800crs with 15 deg slope to top edge and separation layer over

Building wrap or Rigid Air Barrier installed as per manufacturers specification

H3.1 packer supplied and installed by Flashclad

10mm gap

Meter box

NOTE:
Meter box installed with flashing tape and air seal over PEF backing rod as per NZBC E2/AS1



Flashclad
CLADDING FOR LIFE

METER BOX JAMB
Original Scale 1:2
Revision - 01 October 2019

Dualbord
VERTICAL