

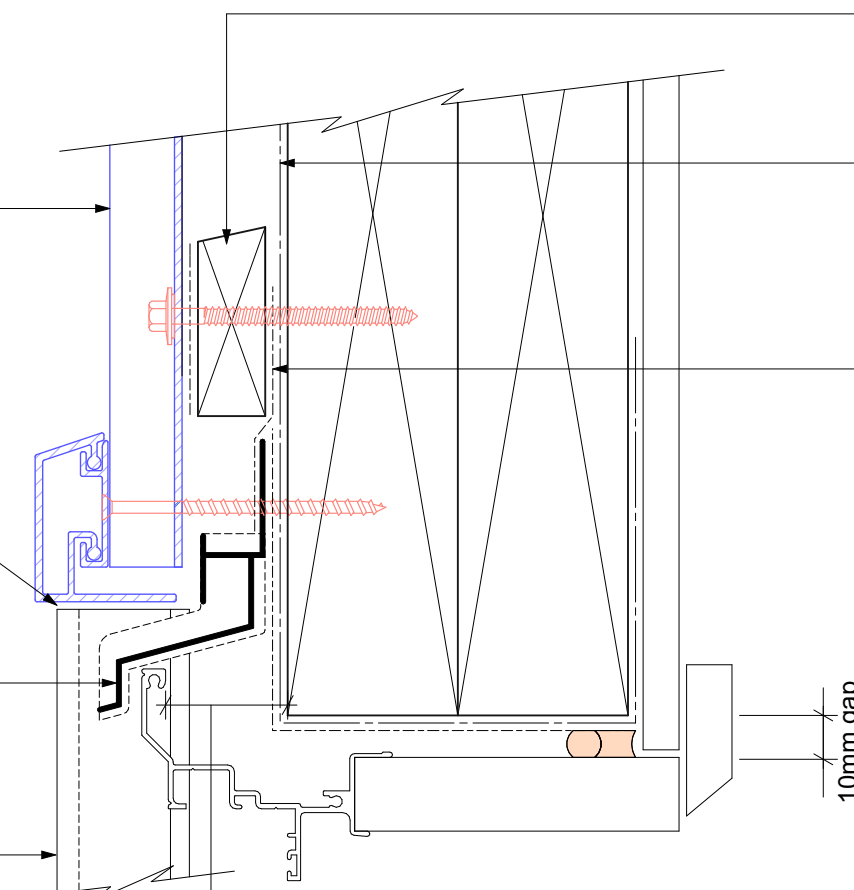
Vertically fixed Dualbord extruded aluminium cladding installed by Flashclad Nationwide Distributor Network

NOTE:
Dualbord Vertical can be fixed to dwang lines at **600mm or 800mm** centres. Type 17 stainless steel 65mm roofing screws.

Extruded aluminium Adjustable Head Trim must be hard down on the top of the Flashclad Jamb fin

Flashclad extruded aluminium one piece Cavity Closure and Head Flashing with Stop End (shown dashed)

Flashclad extruded aluminium 2 Part Jamb



20mm H3.1 horizontal cavity battens at maximum 800crs with 15 deg slope to top edge and separation layer over

Building wrap or Rigid Air Barrier installed as per manufacturers specification

Proprietary tape over head flashing supplied and installed by Flashclad

10mm gap

25mm from the outside face of the framing (for building wrap detailing) or 25mm from the outside face of the Rigid Air Barrier to the back of the aluminium window or door frame

NOTE:
Aluminium joinery installed with flashing tape and air seal over PEF backing rod as per NZBC E2/AS1