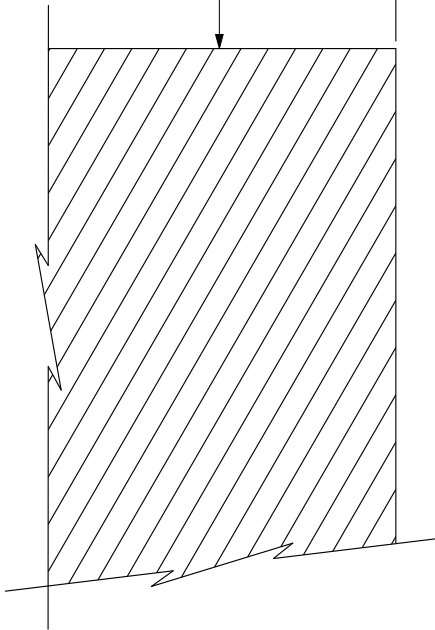


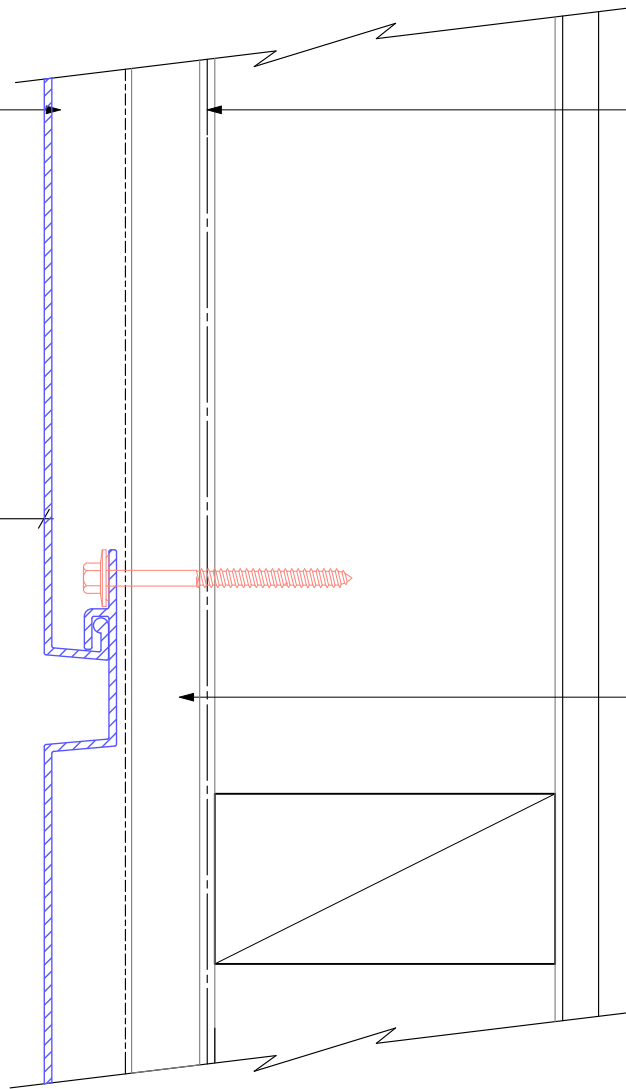
Horizontally fixed Dualbord extruded aluminium cladding installed by Flashclad Nationwide Distributor Network

NOTE:
Fixing into studs at maximum 600mm centres.
Type 17 stainless steel 65mm roofing screws.

Selected balustrade as designers specification



100mm gap



Building wrap or Rigid Air Barrier installed as per manufacturers specification

20mm H3.1 vertical cavity batten with separation layer over