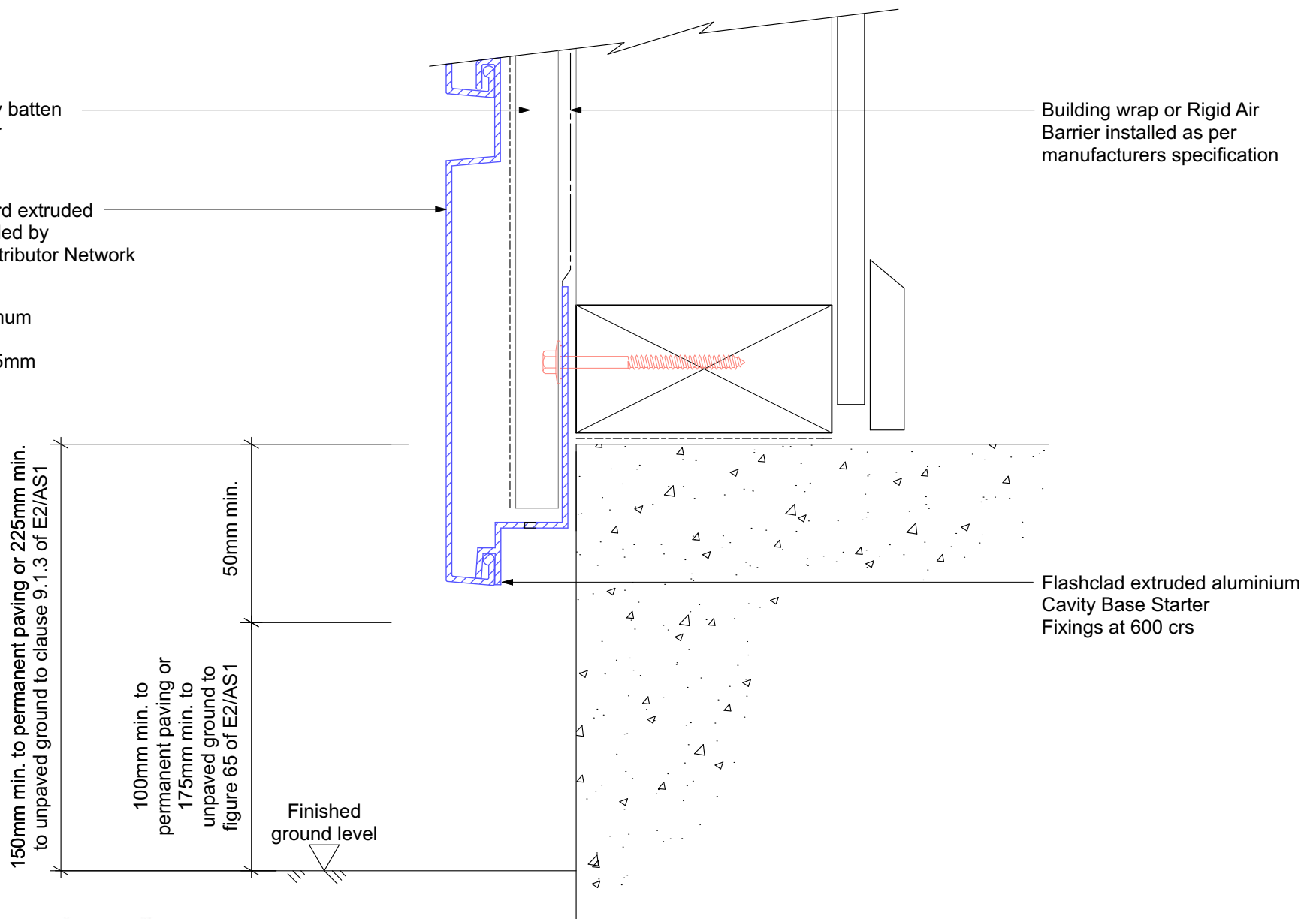


20mm H3.1 vertical cavity batten with separation layer over

Horizontally fixed Dualbord extruded aluminium cladding installed by Flashclad Nationwide Distributor Network

NOTE:
Fixing into studs at maximum 600mm centres.
Type 17 stainless steel 65mm roofing screws.

Building wrap or Rigid Air Barrier installed as per manufacturers specification



BASE STARTER AND CAVITY CLOSURE

Original Scale 1:2

Revision - 01 October 2019

Dualbord

HORIZONTAL