



FLASHCLAD: Aluminium profiled cladding system. Vertical orientation. Note that this detail shows the DUALBORD-01 VERTICAL profile, but can also be used for the following vertically mounted profiles; EUROLAP 65, EUROLAP 95, EUROLINE.

SEPARATION LAYER: PVC Construction Tape. Ovatape, or similar. Supplied & fitted by FlashClad installer.

FIXINGS: H17 type SS screw @ 600 crs with min. 65mm frame embedment.

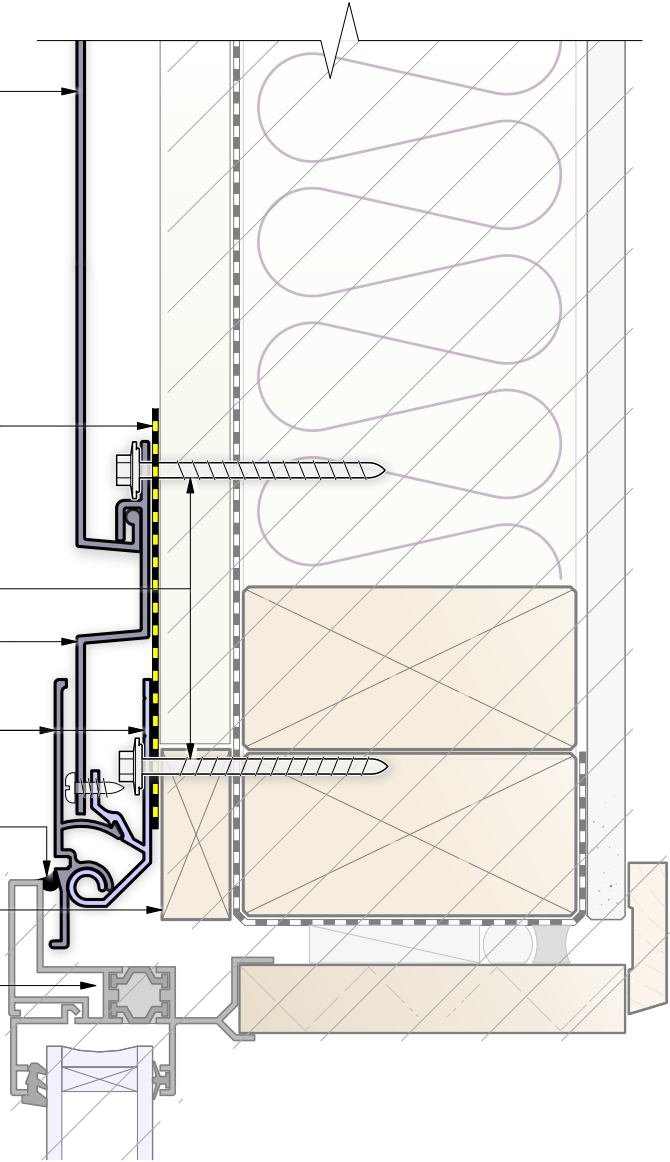
FLASHCLAD: Aluminium profiled cladding system. Vertical orientation\*.

FLASHCLAD: Termination cap. Installed in two parts.

SEALANT: Full height continuous bead. Exterior Rated.

PACKER: H3.1 treatment. Supplied & fitted by FlashClad installer.

HATCHED AREA: Denotes the indicative construction context. It is assumed that project specific requirements are confirmed elsewhere in the drawing set including; window joinery, reveals, internal trims, wall linings, framing, blocking, packers, battens, insulation, E2 compliance, and other NZBC matters.



## VERTICAL EUROBORD RANGE - FLUSH-MOUNTED JAMB

Detail Name:

**DB1V\_WFJ**

Detail Ref:

Date: 18/10/2023

0 mm Scale: 1:2 @ A4 100 mm

DISCLAIMER: All Flashclad Cladding systems are to be supplied and installed by the approved Flashclad Nationwide Distributor Network, and installed in accordance with Flashclad Manufacturer's Documentation, Project-specific Architectural Drawings and Specification, and NZBC E2/AS1.

DUALBORD & EUROBORD:  
Cavity-based, interlocking powder coated  
aluminium weatherboard cladding system.

COPYRIGHT ©:  
2019 Flashclad Dualbord.  
2019 Flashclad Eurobord.

CONTACT & INFO:  
Flashclad Ltd. +64 9 273 5811  
info@flashclad.co.nz, www.flashclad.co.nz