



FLASHCLAD: Aluminium profiled cladding system. Vertical orientation. Note that this detail shows the DUALBORD-01 VERTICAL profile, but can also be used for the following vertically mounted profiles; EUROLAP 65, EUROLAP 95, EUROLINE.

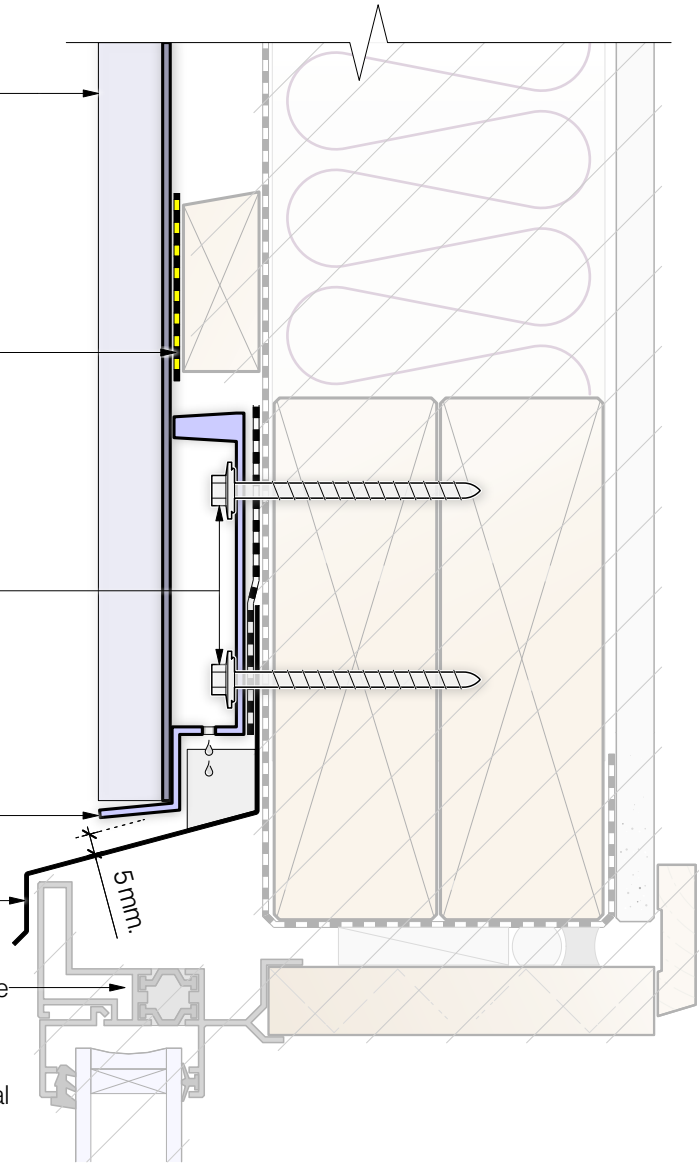
SEPARATION LAYER: PVC Construction Tape. Ovatape, or similar. Supplied & fitted by FlashClad installer.

FIXINGS: H17 type SS screw @ 600 crs with min. 65mm frame embedment.

FLASHCLAD: Cavity Base Starter. Fixings at 600 crs.

FLASHING: Supplied and fitted by installer, to meet NZBC/E2.

HATCHED AREA: Denotes the indicative construction context. It is assumed that project specific requirements are confirmed elsewhere in the drawing set including; window joinery, reveals, internal trims, wall linings, framing, blocking, packers, battens, insulation, E2 compliance, and other NZBC matters.



VERTICAL DUALBORD - FLUSH-MOUNTED HEAD

Detail Name:

DB1V_WFH

Detail Ref:

Date: 23/09/2023

0 mm Scale: 1:2 @ A4 100 mm

DISCLAIMER: All Flashclad Cladding systems are to be supplied and installed by the approved Flashclad Nationwide Distributor Network, and installed in accordance with Flashclad Manufacturer's Documentation, Project-specific Architectural Drawings and Specification, and NZBC E2/AS1.

DUALBORD & EUROBOARD:
Cavity-based, interlocking powder coated
aluminium weatherboard cladding system.

COPYRIGHT ©:
2019 Flashclad Dualbord.
2019 Flashclad Eurobord.

CONTACT & INFO:
Flashclad Ltd. +64 9 273 5811
info@flashclad.co.nz, www.flashclad.co.nz