



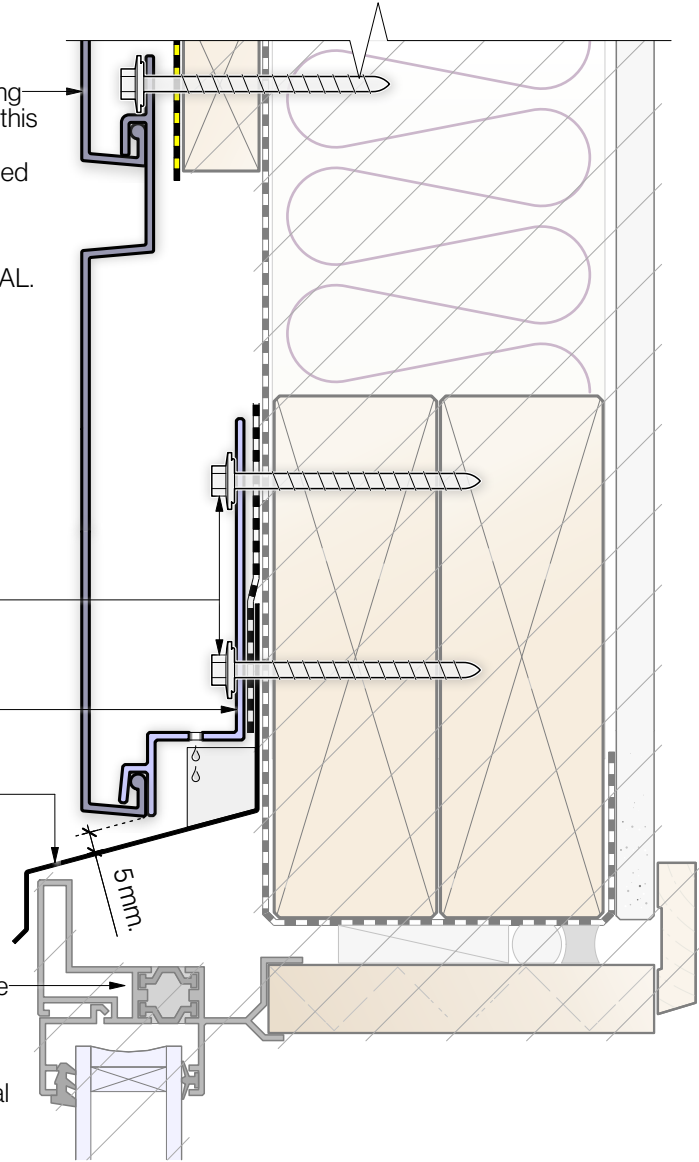
FLASHCLAD: Aluminium profiled cladding system. Horizontal orientation. Note that this detail shows the DUALBORD-01 HORIZONTAL profile, but can also be used for the following horizontally mounted profiles; DUALBORD-02, EUROLAP 65, EUROLAP 95, EUROLAP 210 HORIZONTAL, EUROLINE HORIZONTAL.

FIXINGS: H17 type SS screw @ 600 crs with min. 65mm frame embedment.

FLASHCLAD: Cavity Base Starter. Fixings at 600 crs.

FLASHING: Supplied and fitted by installer, to meet NZBC/E2.

HATCHED AREA: Denotes the indicative construction context. It is assumed that project specific requirements are confirmed elsewhere in the drawing set including; window joinery, reveals, internal trims, wall linings, framing, blocking, packers, battens, insulation, E2 compliance, and other NZBC matters.



HORIZONTAL EUROBORD RANGE - FLUSH-MOUNTED HEAD

Detail Name:

DB1H_WFH

Detail Ref:

Date: 18/10/2023

0 mm Scale: 1:2 @ A4 100 mm

DISCLAIMER: All Flashclad Cladding systems are to be supplied and installed by the approved Flashclad Nationwide Distributor Network, and installed in accordance with Flashclad Manufacturer's Documentation, Project-specific Architectural Drawings and Specification, and NZBC E2/AS1.

DUALBORD & EUROBORD:
Cavity-based, interlocking powder coated aluminium weatherboard cladding system.

COPYRIGHT ©:
2019 Flashclad Dualbord.
2019 Flashclad Eurobord.

CONTACT & INFO:
Flashclad Ltd. +64 9 273 5811
info@flashclad.co.nz, www.flashclad.co.nz