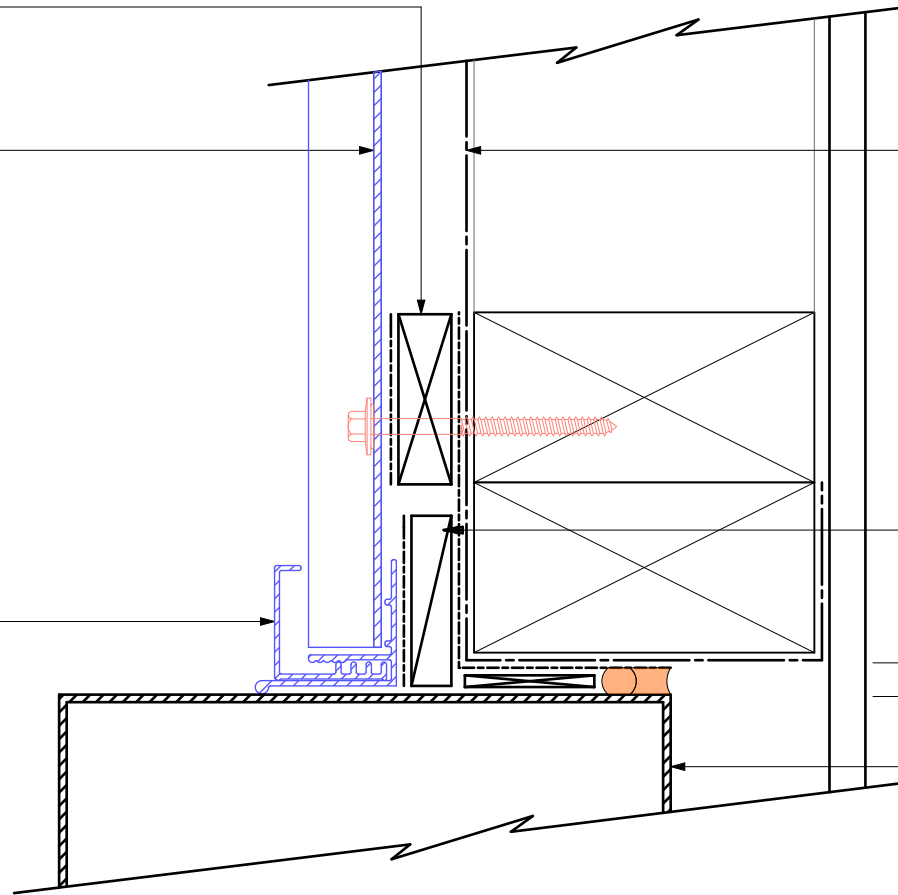


20mm H3.1 vertical cavity batten
with separation layer over

Bevelbord extruded aluminium
cladding installed by Flashclad
Nationwide Distributor Network

NOTE:
Fixing into studs at maximum
600mm centres.
Type 17 stainless steel 65mm
roofing screws.

Flashclad extruded aluminium
2 Part Jamb



Building wrap or Rigid Air
Barrier installed as per
manufacturers specification

H3.1 packer supplied and
installed by Flashclad

10mm gap

Meter box

NOTE:
Meter box installed with
flashing tape and air seal over
PEF backing rod as per
NZBC E2/AS1