

20mm H3.1 vertical cavity batten with separation layer over

Bevelbord extruded aluminium cladding installed by Flashclad Nationwide Distributor Network

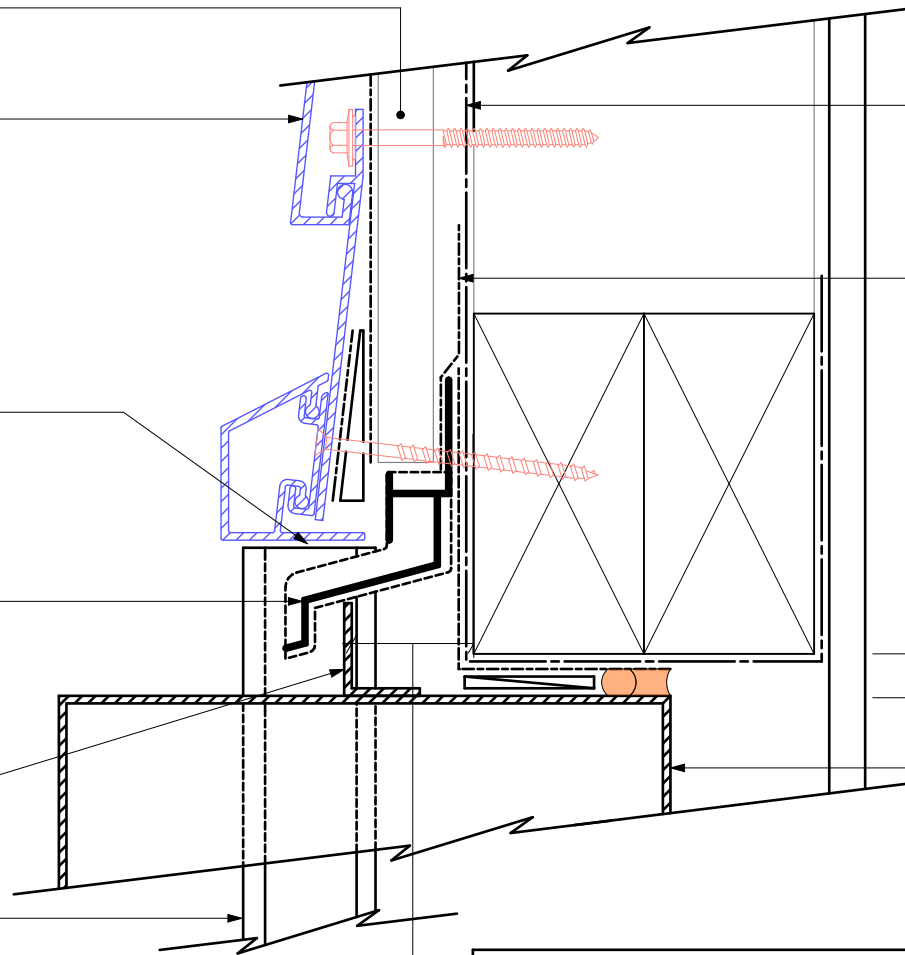
NOTE:
Fixing into studs at maximum 600mm centres.
Type 17 stainless steel 65mm roofing screws.

Extruded aluminium Adjustable Head Trim must be hard down on the top of the Flashclad Jamb fin

Flashclad extruded aluminium one piece Cavity Closure and Head Flashing with Stop End (shown dashed)

Aluminium 25 x 25 x 3mm angle sealed and riveted to meter box

Flashclad extruded aluminium 2 Part Jamb



Building wrap or Rigid Air Barrier installed as per manufacturers specification

Proprietary tape over head flashing supplied and installed by Flashclad

10mm gap

Meter box

25mm from the outside face of the framing (for building wrap detailing) or 25mm from the outside face of the Rigid Air Barrier to the back of the aluminium angle

NOTE:
Meter box installed with flashing tape and air seal over PEF backing rod as per NZBC E2/AS1