

20mm H3.1 vertical cavity batten  
with separation layer over

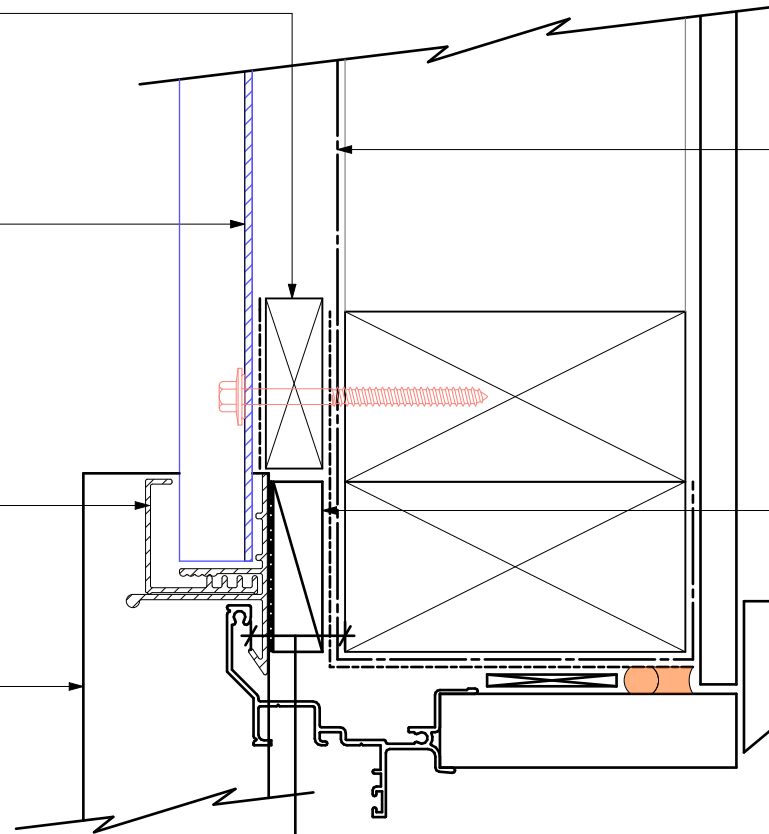
Bevelbord extruded aluminium  
cladding installed by Flashclad  
Nationwide Distributor Network

NOTE:  
Fixing into studs at maximum  
600mm centres.  
Type 17 stainless steel 65mm  
roofing screws.

Flashclad extruded aluminium  
2 Part Jamb

Flashclad extruded aluminium Sill

NOTE:  
Sill provides full joinery support  
(wanz bar not required)



Building wrap or Rigid Air  
Barrier installed as per  
manufacturers specification

H3.1 packer supplied and  
installed by Flashclad

10mm gap

25mm from the outside face of the  
framing (for building wrap detailing)  
or 25mm from the outside face of the  
Rigid Air Barrier to the back of the  
aluminium window or door frame

NOTE:  
Aluminium joinery installed with  
flashing tape and air seal over  
PEF backing rod as per  
NZBC E2/AS1