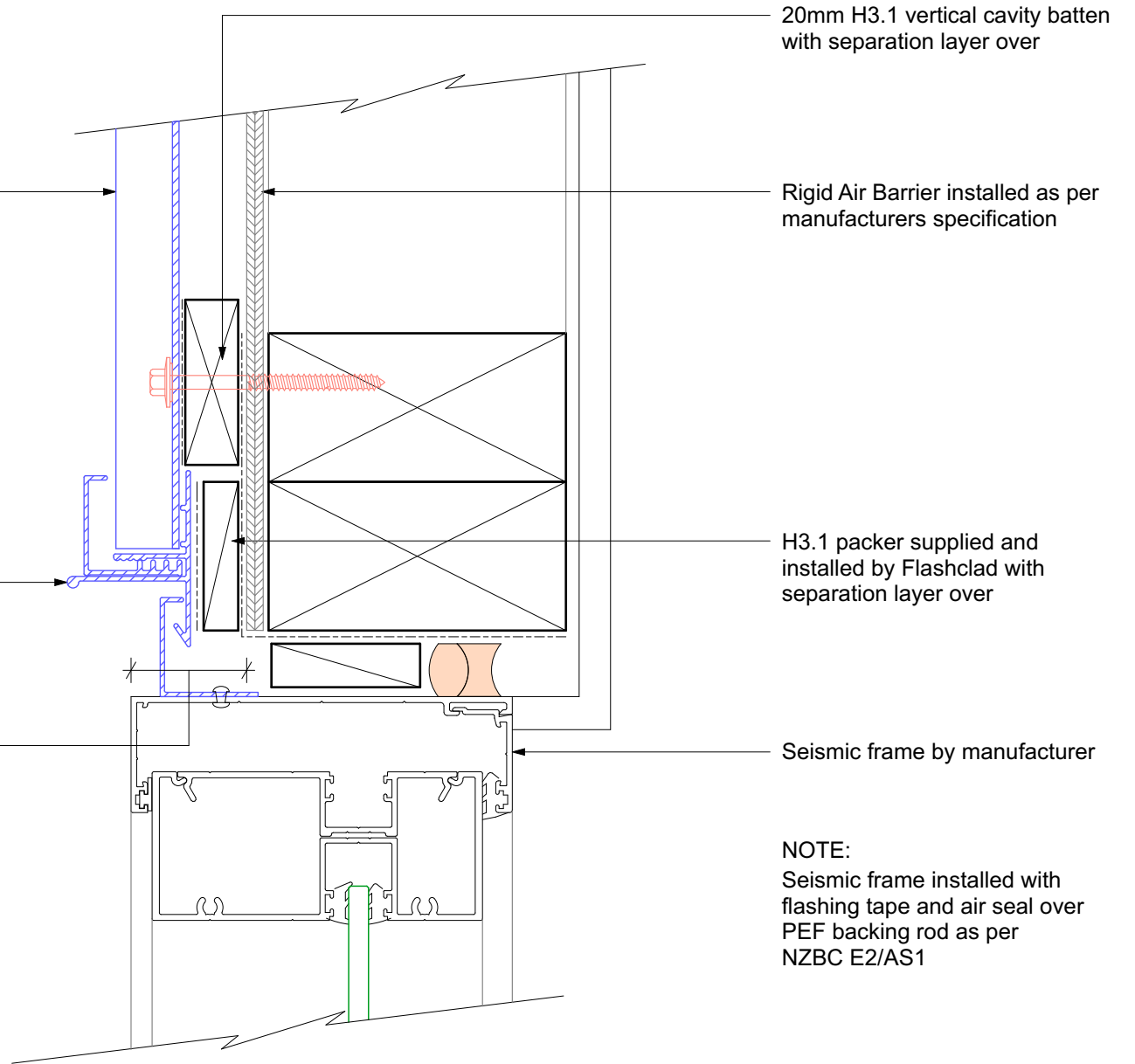


Selected Flashclad extruded aluminium cladding installed by Flashclad Nationwide Distributor Network

NOTE:
Fixing into studs at maximum 600mm centres.
Type 17 stainless steel 65mm roofing screws.

Flashclad extruded aluminium 2 Part Jamb

35mm min from the outside face of the Rigid Air Barrier to the front of the Seismic Window or Door frame



20mm H3.1 vertical cavity batten with separation layer over

Rigid Air Barrier installed as per manufacturers specification

H3.1 packer supplied and installed by Flashclad with separation layer over

Seismic frame by manufacturer

NOTE:
Seismic frame installed with flashing tape and air seal over PEF backing rod as per NZBC E2/AS1

WINDOW JAMB

Original Scale 1:2
Revision - 01 October 2019

SEISMIC FRAME - EXAMPLE