

Selected Flashclad extruded aluminium cladding installed by Flashclad Nationwide Distributor Network

NOTE:
Fixing into studs at maximum 600mm centres.
Type 17 stainless steel 65mm roofing screws.

Extruded aluminium Adjustable Head Trim must be hard down on the top of the Flashclad Jamb fin

Flashclad extruded aluminium one piece Cavity Closure and Head Flashing with Stop End (shown dashed)

35mm min from the outside face of the Rigid Air Barrier to the front of the Seismic Window or Door frame

Flashclad extruded aluminium 2 Part Jamb

10mm min cover

20mm H3.1 vertical cavity batten with separation layer over

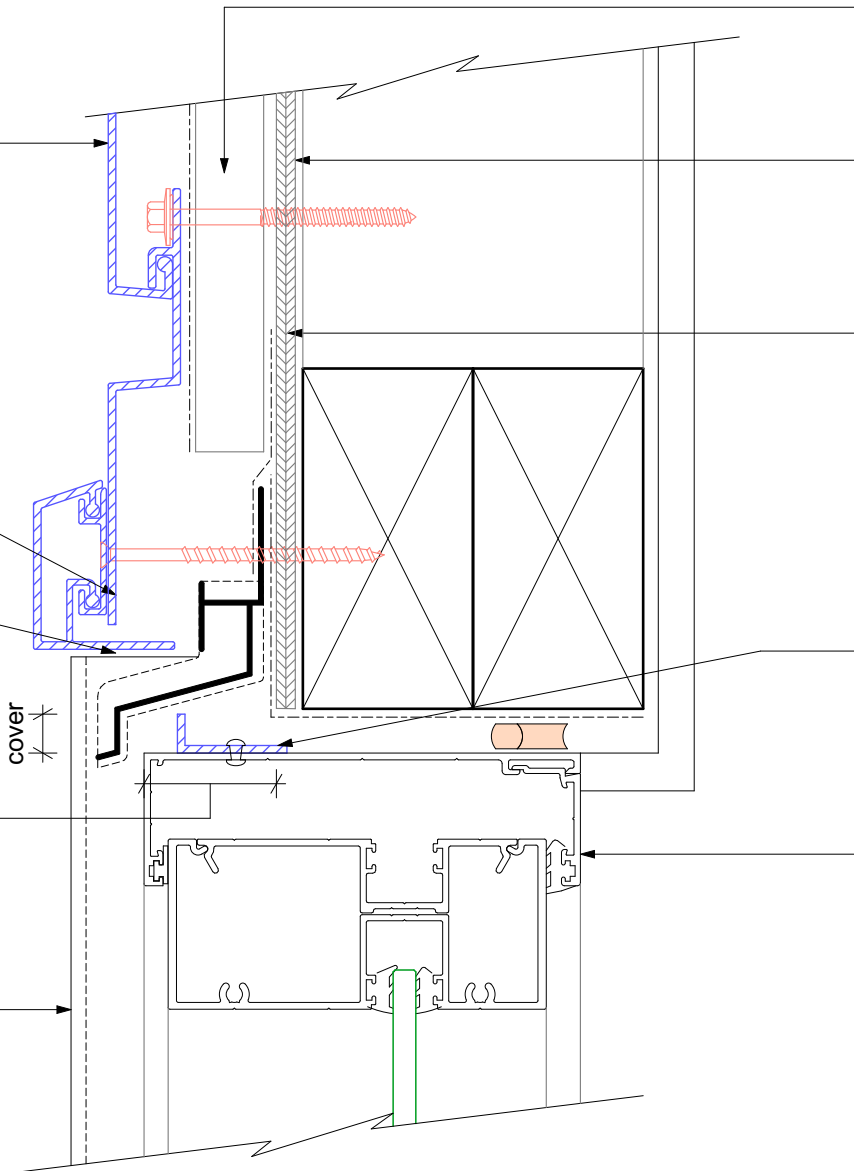
Rigid Air Barrier installed as per manufacturers specification

Proprietary tape over head flashing supplied and installed by Flashclad

Aluminium angle riveted to frame

Seismic frame by manufacturer

NOTE:
Seismic frame installed with flashing tape and air seal over PEF backing rod as per NZBC E2/AS1



WINDOW HEAD

Original Scale 1:2

Revision - 01 October 2019

SEISMIC FRAME - EXAMPLE