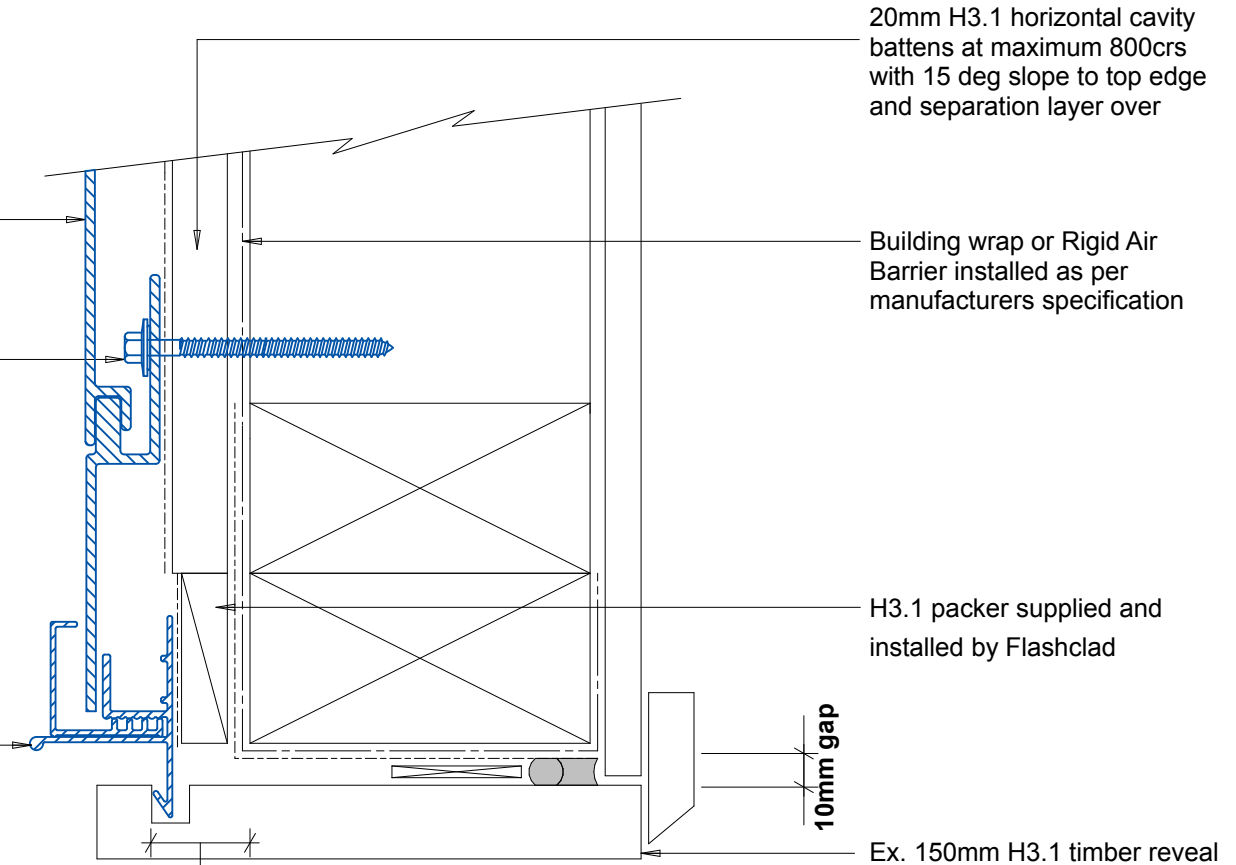


Vertically fixed Eurobord extruded aluminium cladding installed by Flashclad Nationwide Distributor Network

NOTE:
Eurobord Vertical can be fixed to dwang lines at **600mm or 800mm** centres

Flashclad extruded aluminium 2 Part Jamb



22mm from the outside face of the framing (for building wrap detailing) or 22mm from the outside face of the Rigid Air Barrier to the front of the garage reveal groove

20mm H3.1 horizontal cavity battens at maximum 800crs with 15 deg slope to top edge and separation layer over

Building wrap or Rigid Air Barrier installed as per manufacturers specification

H3.1 packer supplied and installed by Flashclad

Ex. 150mm H3.1 timber reveal

NOTE:
Door reveal installed with flashing tape and air seal over PEF backing rod as per NZBC E2/AS1



GARAGE JAMB
Original Scale 1:2
Revision - 20 October 2015

Eurobord
VERTICAL