

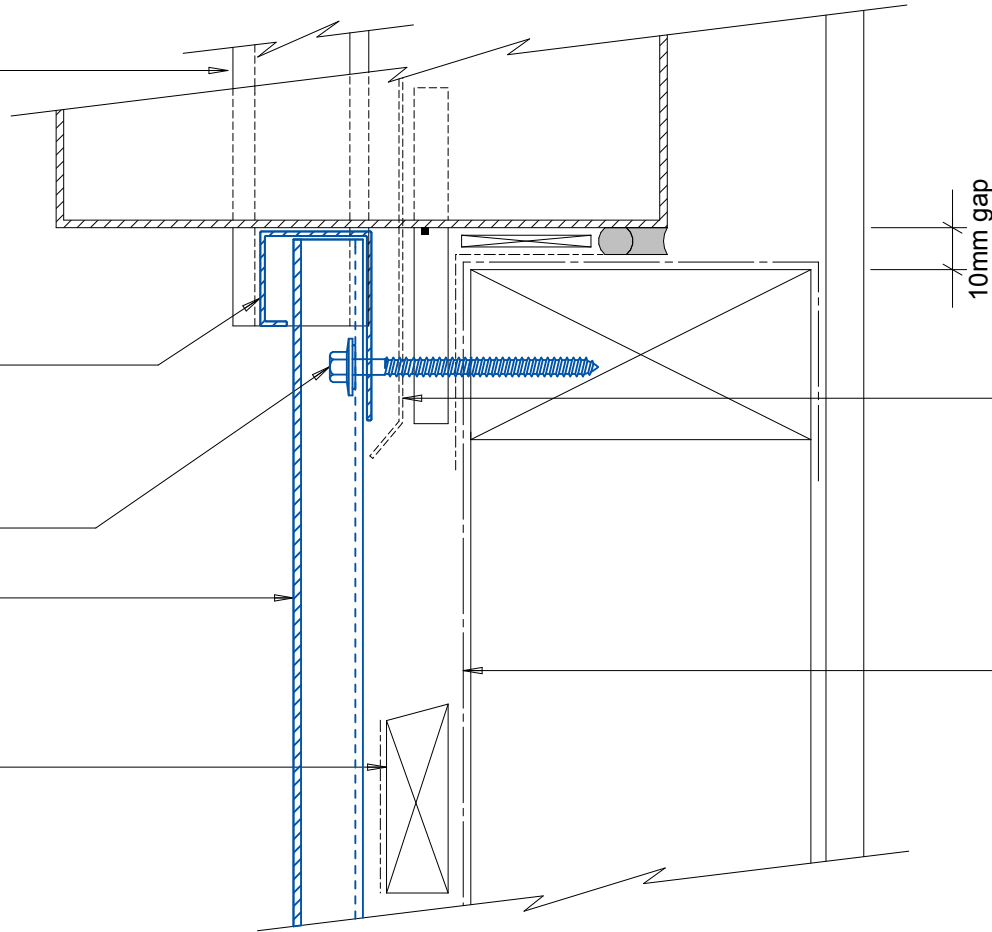
Flashclad extruded aluminium
2 Part Jamb

Flashclad extruded aluminium
Cover Mould

NOTE:
Eurobord Vertical can be fixed to dwang
lines at **600mm or 800mm** centres

Vertically fixed Eurobord extruded
aluminium cladding installed by
Flashclad Nationwide Distributor Network

20mm H3.1 horizontal cavity
battens at maximum 800crs
with 15 deg slope to top edge
and separation layer over



Flashclad Back Plate pack
to behind jamb flashing and
cut to fit around base of
meter box (shown dashed)

Building wrap or Rigid Air
Barrier installed as per
manufacturers specification

NOTE:
Meter box installed with
flashing tape and air seal over
PEF backing rod as per
NZBC E2/AS1



Flashclad
CLADDING FOR LIFE

METER BOX SILL
Original Scale 1:2
Revision - 20 October 2015

Eurobord
VERTICAL