

Vertically fixed Eurobord extruded aluminium cladding installed by Flashclad Nationwide Distributor Network

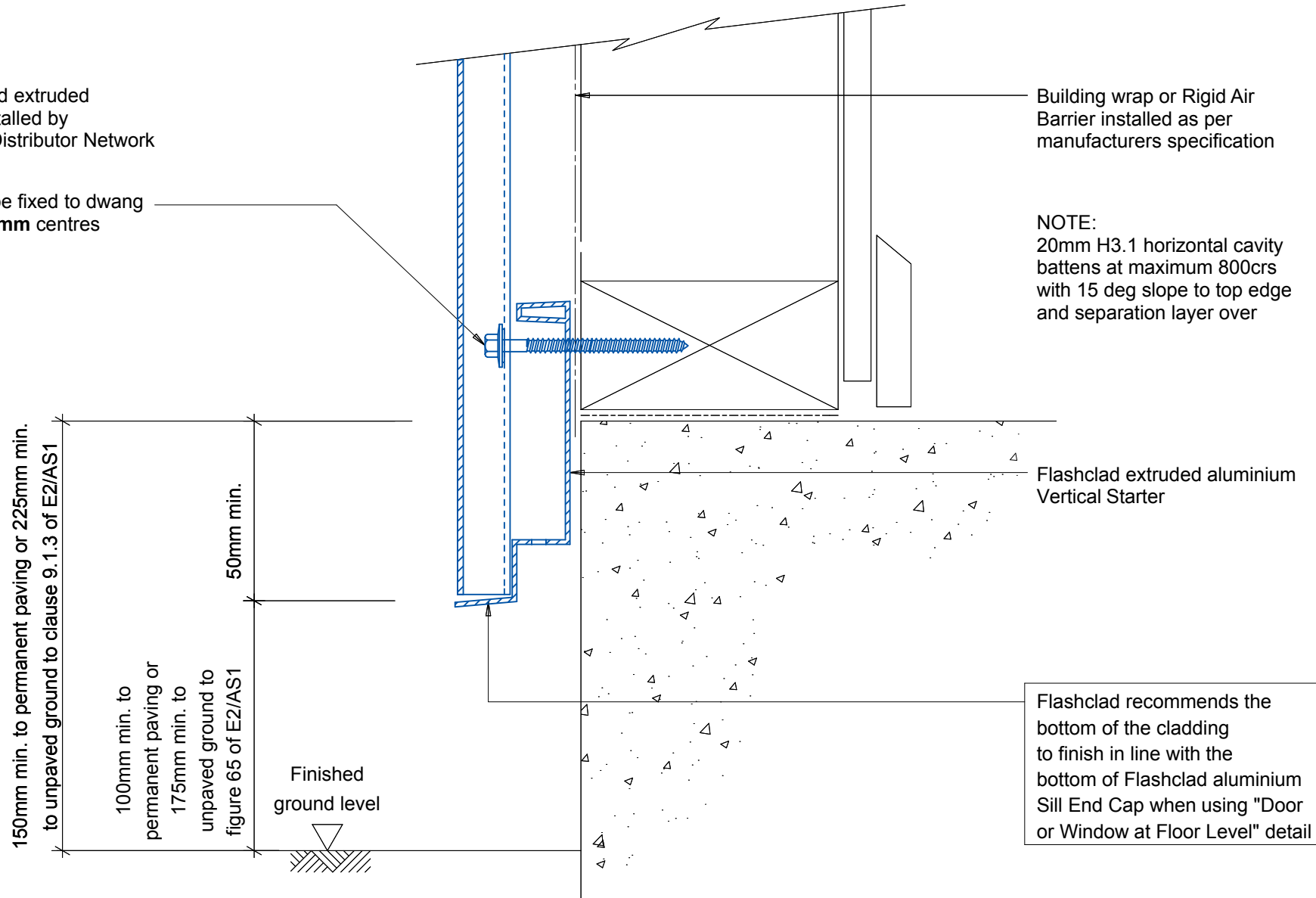
NOTE:

Eurobord Vertical can be fixed to dwang lines at **600mm or 800mm** centres

Building wrap or Rigid Air Barrier installed as per manufacturers specification

NOTE:

20mm H3.1 horizontal cavity battens at maximum 800crs with 15 deg slope to top edge and separation layer over



Flashclad
CLADDING FOR LIFE

**BASE STARTER AND
CAVITY CLOSURE**

Original Scale 1:2
Revision - 20 October 2015

Eurobord
VERTICAL