

Flashclad extruded aluminium  
2 Part Jamb

3mm gap between bottom edge  
of the cladding and the top of the  
Flashclad Sill

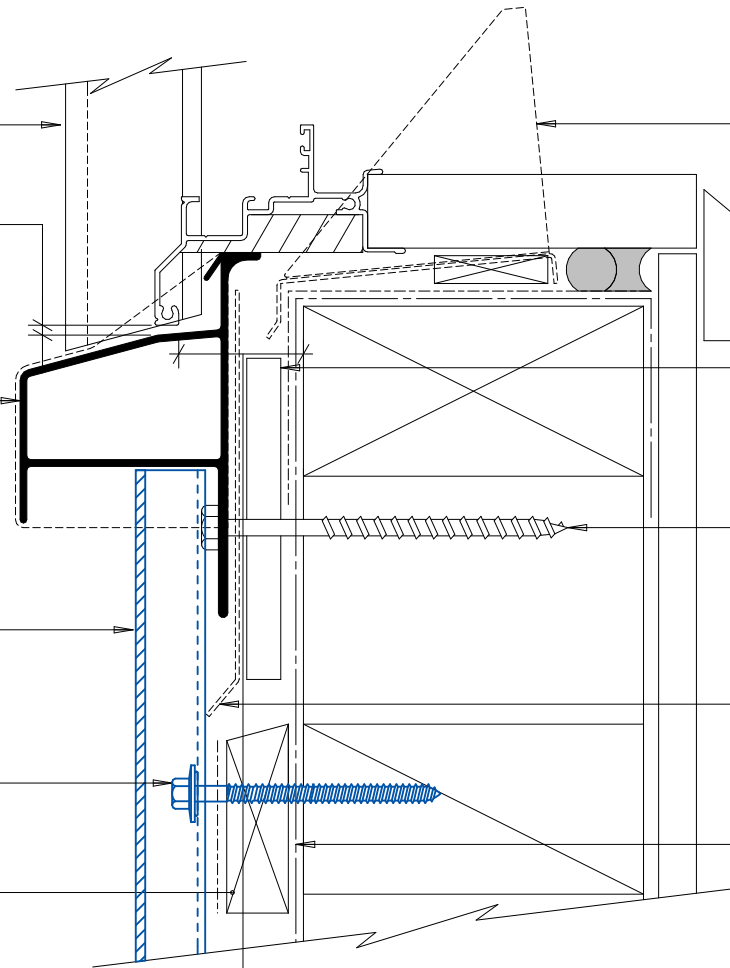
Flashclad extruded aluminium  
Slimline Sill with End Cap  
(shown dashed)

**NOTE:**  
Sill provides full joinery support  
(wanz bar not required)

Vertically fixed Eurobord extruded  
aluminium cladding installed by  
Flashclad Nationwide Distributor Network

**NOTE:**  
Eurobord Vertical can be fixed to dwang  
lines at **600mm or 800mm** centres

20mm H3.1 horizontal cavity  
battens at maximum 800crs  
with 15 deg slope to top edge  
and separation layer over



Flashclad aluminium Mitre  
Soaker supplied by Flashclad  
installed by Builder

10mm gap

H3.1 packer supplied and  
installed by Flashclad

14 gauge hot dip galvanised (316  
SS where required) S.T.H.C  
screws at 600mm crs. with 65mm  
minimum frame penetration.  
Supplied and installed by Flashclad

Flashclad Back Plate  
(shown dashed)

Building wrap or Rigid Air  
Barrier installed as per  
manufacturers specification

25mm from the outside face of the  
framing (for building wrap detailing)  
or 25mm from the outside face of the  
Rigid Air Barrier to the back of the  
aluminium window or door frame

**NOTE:**  
Aluminium joinery installed with  
flashing tape and air seal over  
PEF backing rod as per  
NZBC E2/AS1