

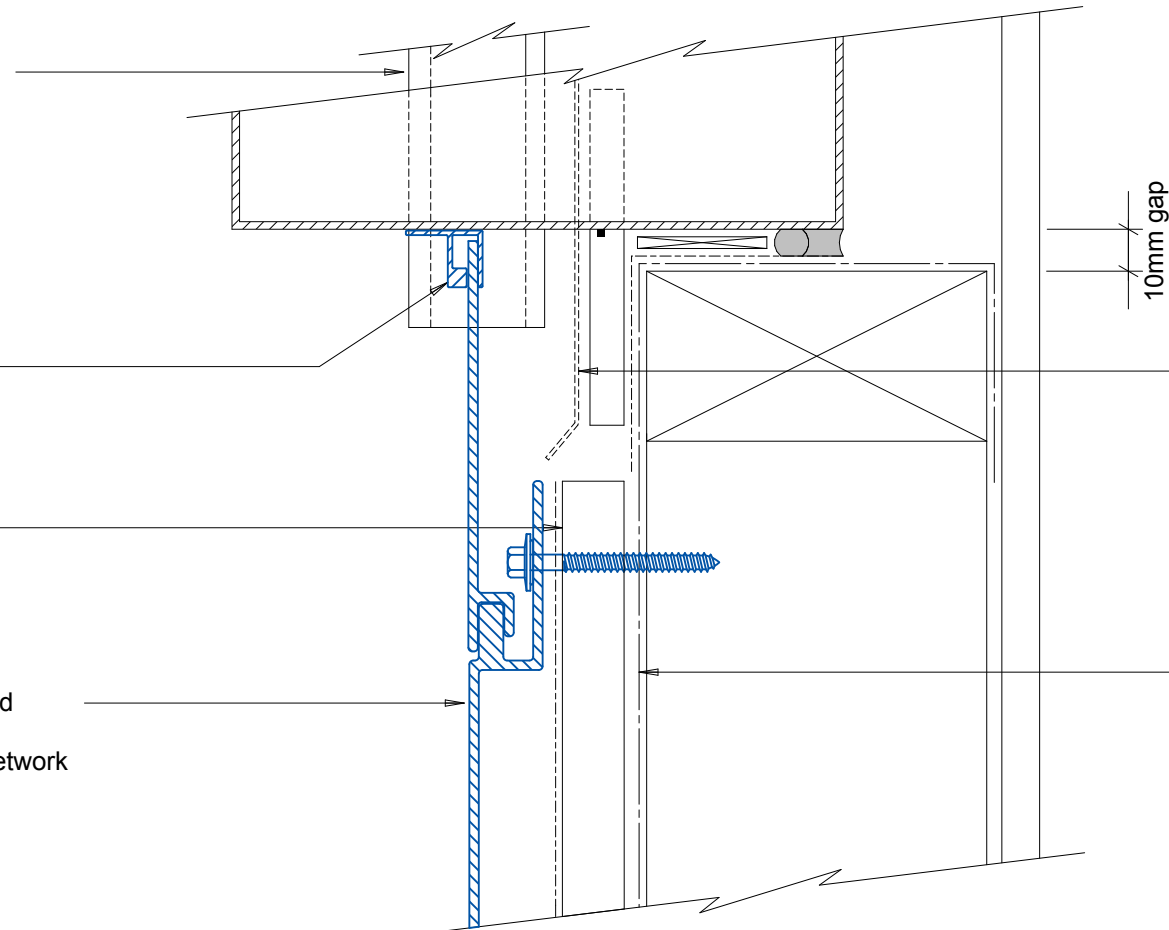
Flashclad extruded aluminium  
2 Part Jamb

Flashclad extruded aluminium  
Locator

20mm H3.1 vertical cavity batten  
with seperation layer over

Horizontally fixed Eurobord extruded  
aluminium cladding installed by  
Flashclad Nationwide Distributor Network

NOTE:  
Fixing into studs at maximum  
600mm centres



Flashclad Back Plate pack  
to behind jamb flashing and  
cut to fit around base of  
meter box(shown dashed)

Building wrap or Rigid Air  
Barrier installed as per  
manufacturers specification

NOTE:  
Meter box installed with  
flashing tape and air seal over  
PEF backing rod as per  
NZBC E2/AS1



**Flashclad**  
CLADDING FOR LIFE

**METER BOX SILL**  
Original Scale 1:2  
Revision - 06 November 2015

**Eurobord**  
**HORIZONTAL**