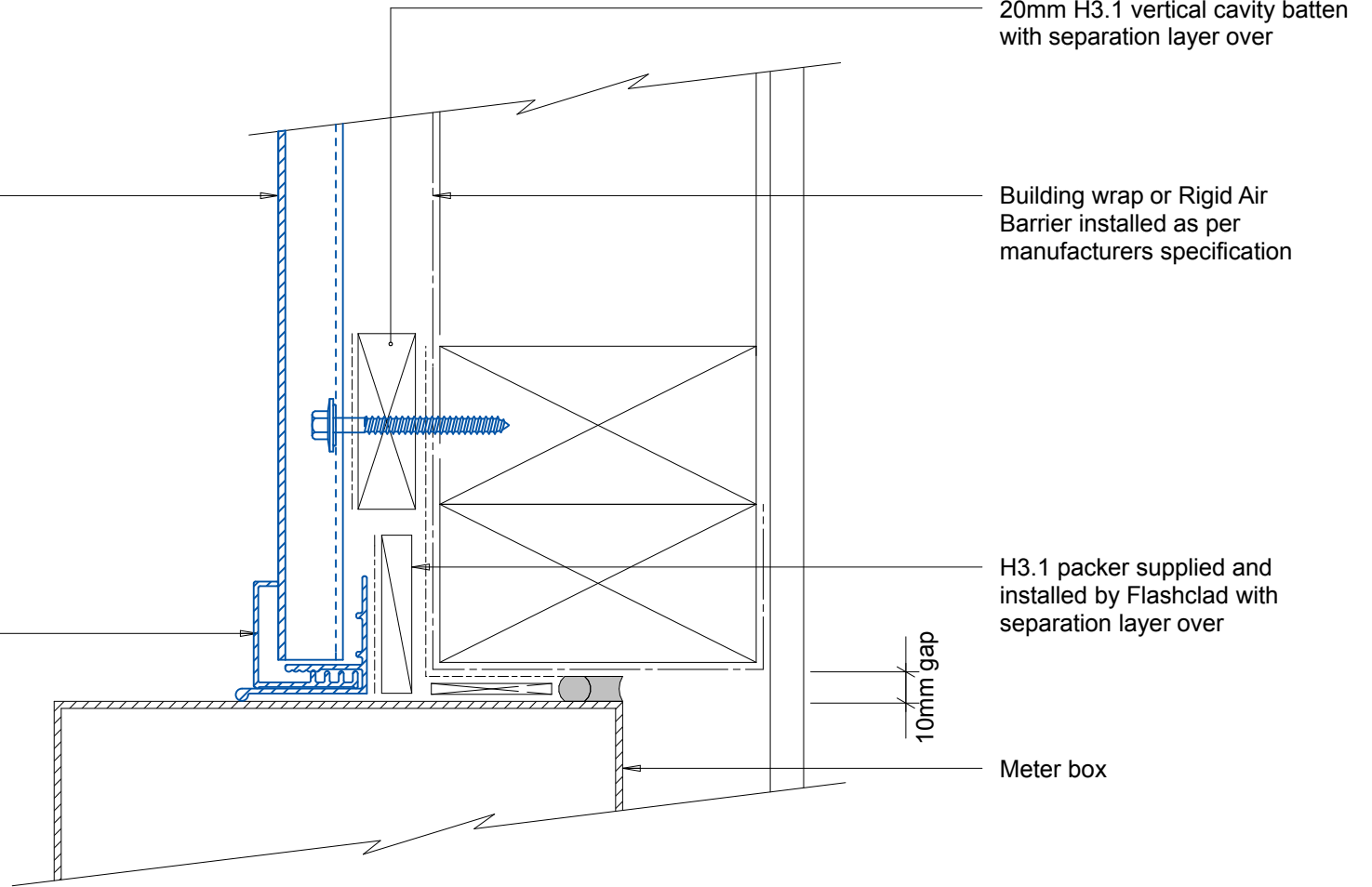


Horizontally fixed Eurobord extruded aluminium cladding installed by Flashclad Nationwide Distributor Network

NOTE:  
Fixing into studs at maximum 600mm centres

Flashclad extruded aluminium 2 Part Jamb sealed to meterbox



20mm H3.1 vertical cavity batten with separation layer over

Building wrap or Rigid Air Barrier installed as per manufacturers specification

H3.1 packer supplied and installed by Flashclad with separation layer over

10mm gap

Meter box

NOTE:  
Meter box installed with flashing tape and air seal over PEF backing rod as per NZBC E2/AS1



**Flashclad**  
CLADDING FOR LIFE

**METER BOX JAMB**  
Original Scale 1:2  
Revision - 20 October 2015

**Eurobord**  
**HORIZONTAL**