

Horizontally fixed Eurobord extruded aluminium cladding installed by Flashclad Nationwide Distributor Network

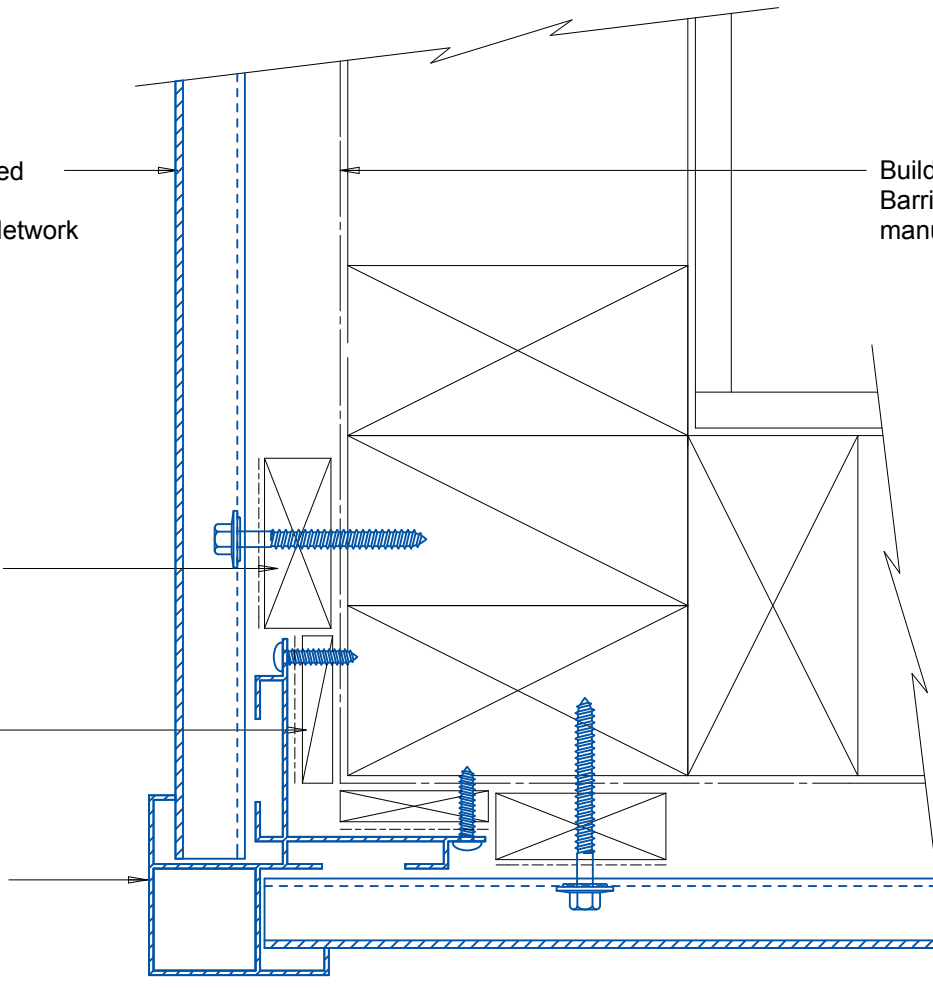
NOTE:
Fixing into studs at maximum 600mm centres

Building wrap or Rigid Air Barrier installed as per manufacturers specification

20mm H3.1 vertical cavity batten with separation layer over

H3.1 200mm long packers with separation layer over

Flashclad extruded aluminium External Corner



Flashclad
CLADDING FOR LIFE

EXTERNAL CORNER

Original Scale 1:2
Revision - 20 October 2015

Eurobord
HORIZONTAL