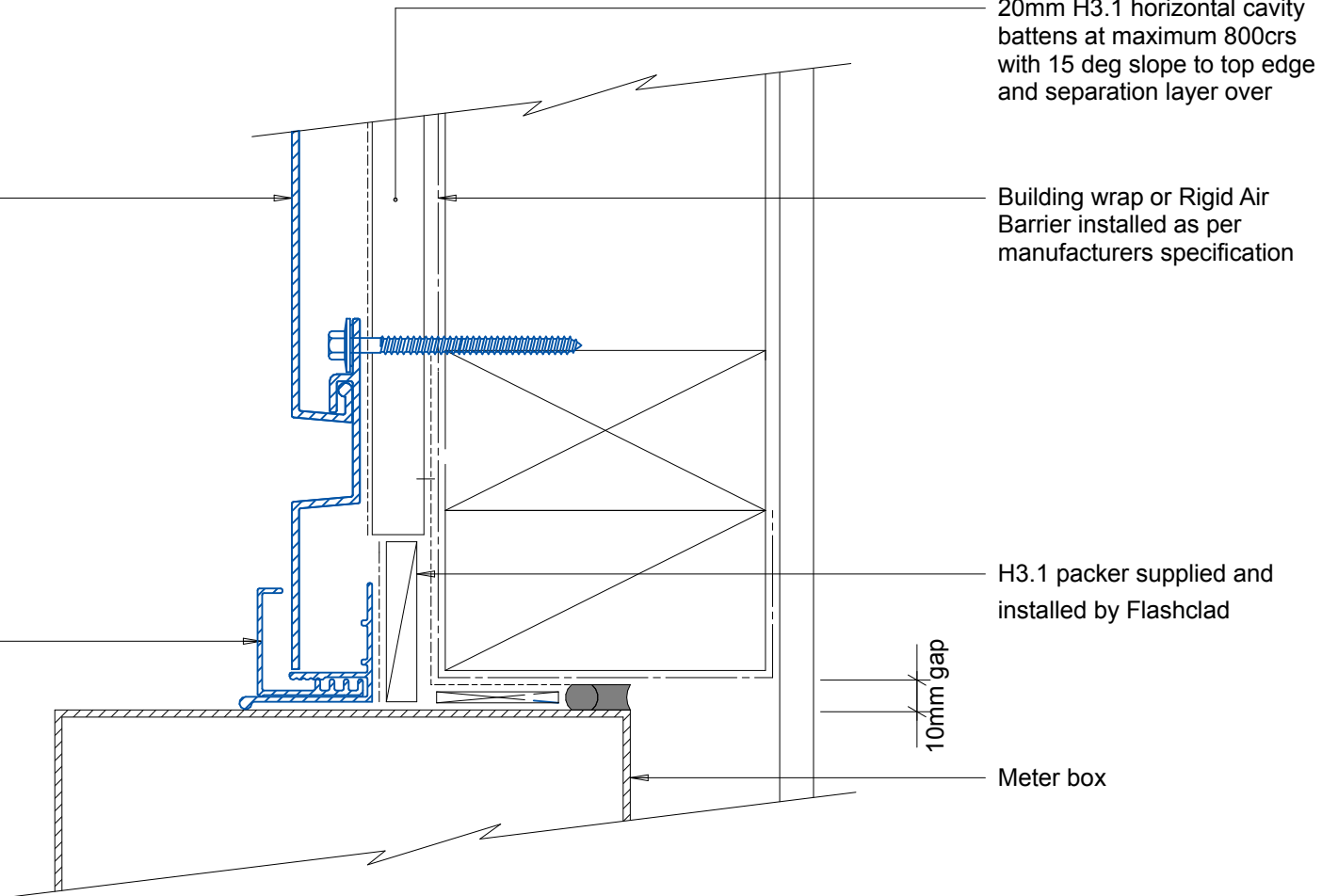


Vertically fixed Dualbord extruded aluminium cladding installed by Flashclad Nationwide Distributor Network

**NOTE:**

Dualbord Vertical can be fixed to dwang lines at **600mm or 800mm** centres

Flashclad extruded aluminium 2 Part Jamb sealed to meterbox



**NOTE:**  
Meter box installed with flashing tape and air seal over PEF backing rod as per NZBC E2/AS1



**Flashclad**  
CLADDING FOR LIFE

**METER BOX JAMB**  
Original Scale 1:2  
Revision - 23 November 2015

**Dualbord**  
**VERTICAL**