

Flashclad extruded aluminium
2 Part Jamb

3mm gap between bottom edge
of the cladding and the top of the
Flashclad Sill

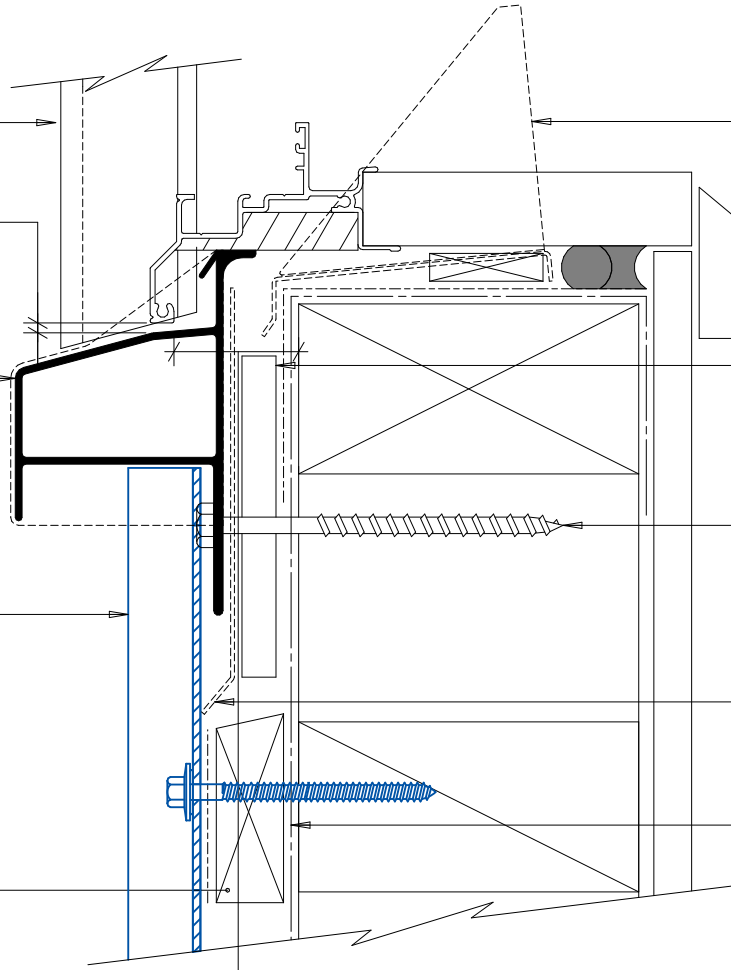
Flashclad extruded aluminium sill
with End Cap (shown dashed)

NOTE:
Sill provides full joinery support
(wanz bar not required)

Vertically fixed Dualbord extruded
aluminium cladding installed by
Flashclad Nationwide Distributor Network

NOTE:
Dualbord Vertical can be fixed to dwang
lines at **600mm or 800mm** centres

20mm H3.1 horizontal cavity
battens at maximum 800crs
with 15 deg slope to top edge
and separation layer over



Flashclad aluminium Mitre
Soaker supplied by Flashclad
installed by Builder

10mm gap

H3.1 packer supplied and
installed by Flashclad

14 gauge hot dip galvanised (316
SS where required) S.T.H.C
screws at 600mm crs. with 65mm
minimum frame penetration.
Supplied and installed by Flashclad

Flashclad Back Plate
(shown dashed)

Building wrap or Rigid Air
Barrier installed as per
manufacturers specification

25mm from the outside face of the
framing (for building wrap detailing)
or 25mm from the outside face of the
Rigid Air Barrier to the back of the
aluminium window or door frame

NOTE:
Aluminium joinery installed with
flashing tape and air seal over
PEF backing rod as per
NZBC E2/AS1



Flashclad
CLADDING FOR LIFE

SILL
Original Scale 1:2
Revision - 23 November 2015

Dualbord
VERTICAL