

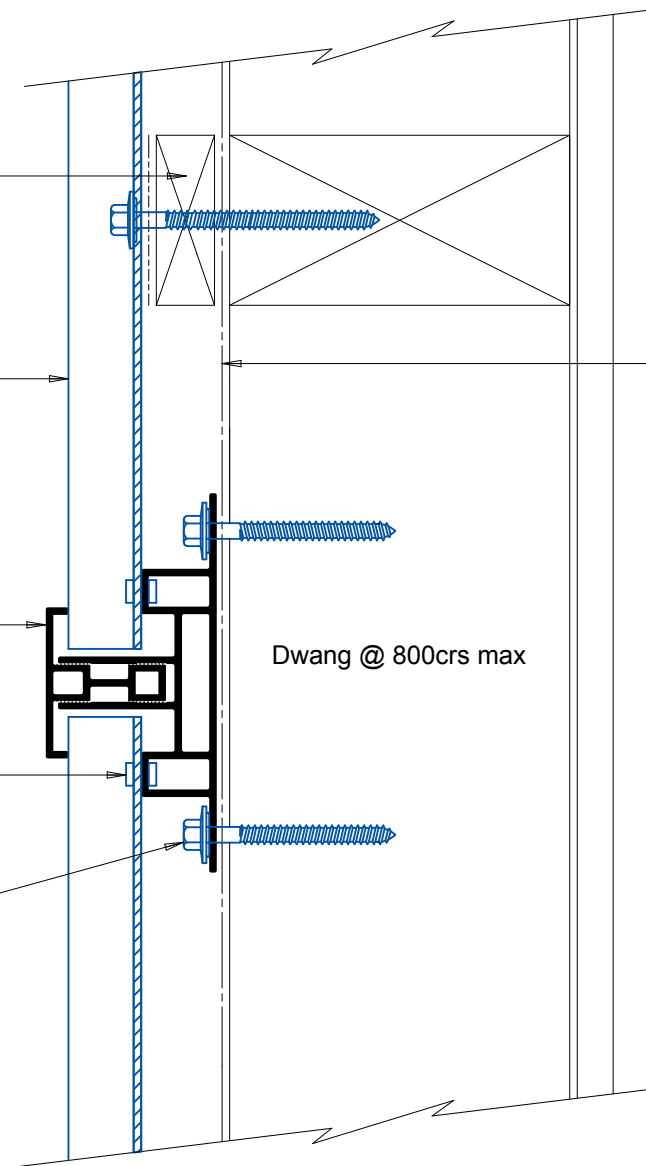
20mm H3.1 vertical cavity batten
with separation layer over

Selected Flashclad extruded aluminium
cladding installed by Flashclad
Nationwide Distributor Network

Flashman extruded aluminium
Cladding Jointer

Rivet fix Cladding extrusions to jointer

NOTE:
Jointer can be fixed to dwang lines
at **600mm or 800mm** centres



Building wrap or Rigid Air Barrier
installed as per manufacturers
specification

NOTE:
Jointer suitable for Horizontally
fixed Eurobord, Dualbord and
Bevelbord