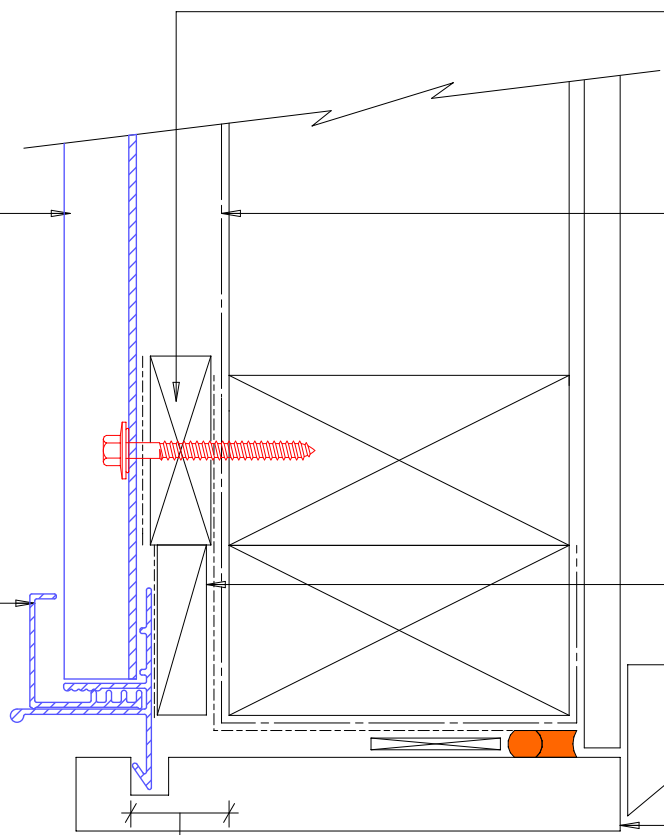


Horizontally fixed Dualbord extruded aluminium cladding installed by Flashclad Nationwide Distributor Network

NOTE:
Fixing into studs at maximum 600mm centres

Flashclad extruded aluminium 2 Part Jamb



20mm H3.1 vertical cavity batten with separation layer over

Building wrap or Rigid Air Barrier installed as per manufacturers specification

H3.1 packer supplied and installed by Flashclad with separation layer over

10mm gap

Ex. 150mm H3.1 timber reveal

22mm from the outside face of the framing (for building wrap detailing) or 22mm from the outside face of the Rigid Air Barrier to the front of the garage reveal groove

NOTE:
Door reveal installed with flashing tape and air seal over PEF backing rod as per NZBC E2/AS1



GARAGE JAMB
Original Scale 1:2
Revision - 01 December 2015

Dualbord
HORIZONTAL