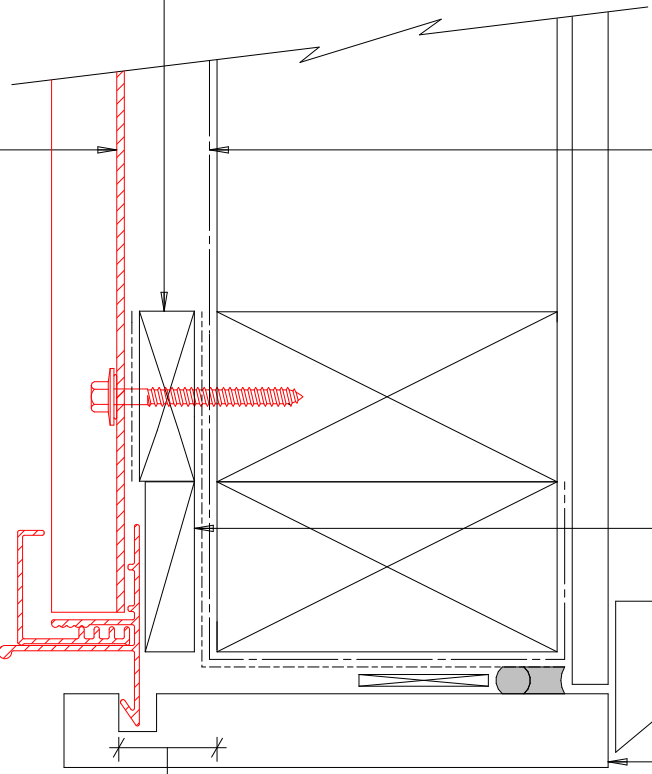


20mm H3.1 vertical cavity batten
with separation layer over

Bevelbord extruded aluminium
cladding installed by Flashclad
Nationwide Distributor Network

NOTE:
Fixing into studs at maximum
600mm centres

Flashclad extruded aluminium
2 Part Jamb



Building wrap or Rigid Air
Barrier installed as per
manufacturers specification

H3.1 packer supplied and
installed by Flashclad

10mm gap

Ex. 150mm H3.1 timber reveal

22mm from the outside face of the
framing (for building wrap detailing)
or 22mm from the outside face of the
Rigid Air Barrier to the front of the
garage reveal groove

NOTE:
Door reveal installed with
flashing tape and air seal over
PEF backing rod as per
NZBC E2/AS1



Flashclad
CLADDING FOR LIFE

GARAGE JAMB
Original Scale 1:2
Revision - 01 December 2015

Bevelbord