

20mm H3.1 vertical cavity batten with separation layer over

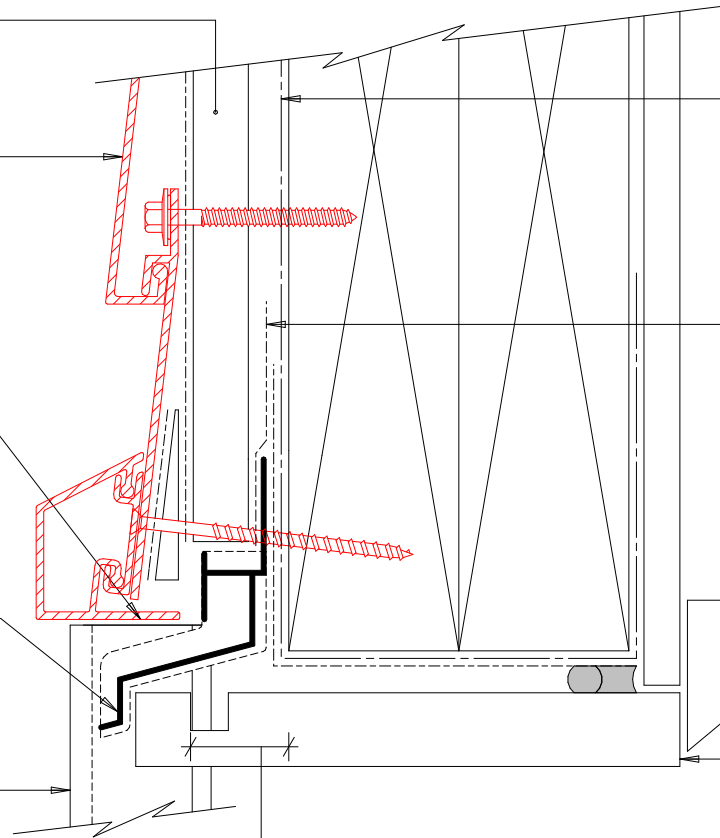
Bevelbord extruded aluminium cladding installed by Flashclad Nationwide Distributor Network

NOTE:
Fixing into studs at maximum 600mm centres

Extruded aluminium Adjustable Head Trim must be hard down on the top of the Flashclad Jamb fin

Flashclad extruded aluminium one piece Cavity Closure and Head Flashing with Stop End (shown dashed)

Flashclad extruded aluminium 2 Part Jamb



Building wrap or Rigid Air Barrier installed as per manufacturers specification

Proprietary tape over head flashing supplied and installed by Flashclad

10mm gap

Ex. 150mm H3.1 timber reveal

22mm from the outside face of the framing (for building wrap detailing) or 22mm from the outside face of the Rigid Air Barrier to the front of the garage reveal groove

NOTE:
Door reveal installed with flashing tape and air seal over PEF backing rod as per NZBC E2/AS1



Flashclad
CLADDING FOR LIFE

GARAGE HEAD

Original Scale 1:2

Revision - 01 December 2015

Bevelbord