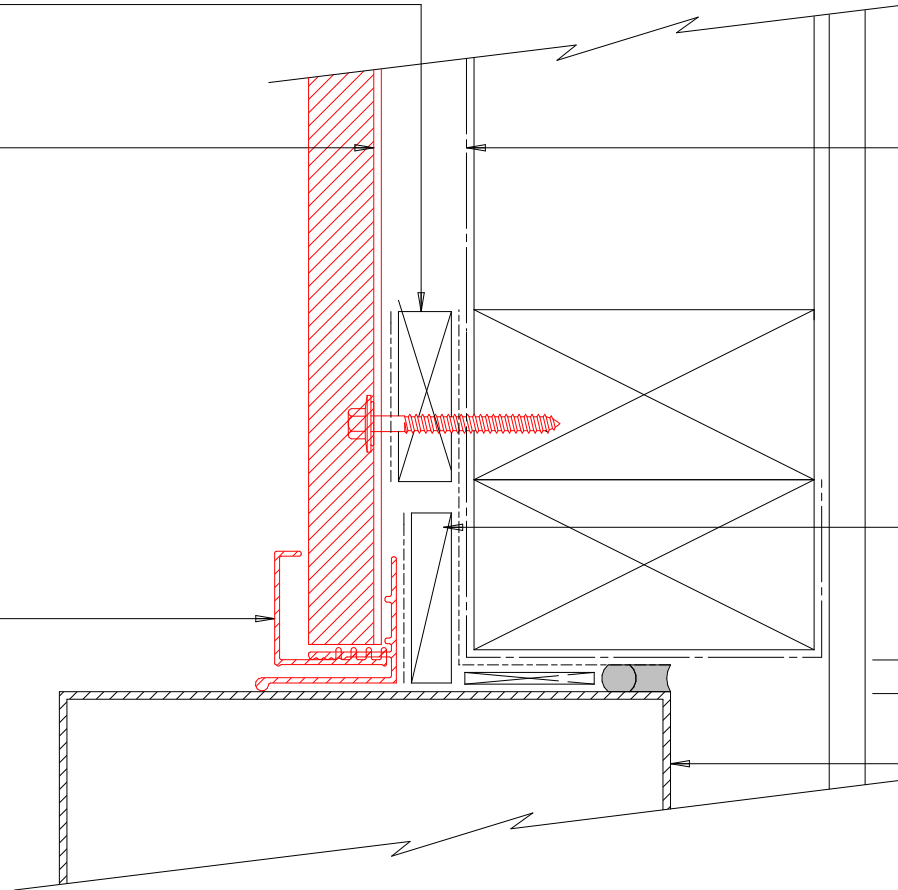


20mm H3.1 vertical cavity batten
with separation layer over

Bevelbord extruded aluminium
cladding installed by Flashclad
Nationwide Distributor Network

NOTE:
Fixing into studs at maximum
600mm centres

Flashclad extruded aluminium
2 Part Jamb



Building wrap or Rigid Air
Barrier installed as per
manufacturers specification

H3.1 packer supplied and
installed by Flashclad

10mm gap

Meter box

NOTE:
Meter box installed with
flashing tape and air seal over
PEF backing rod as per
NZBC E2/AS1



Flashclad
CLADDING FOR LIFE

METER BOX JAMB

Original Scale 1:2
Revision - 01 December 2015

Bevelbord